

# Hotel Service

Optimised daily hotel processes



# wanzl

INNOVATION  
MADE BY WANZL

CREATIVE CENTER  
**wanzl**

# Contents

A SUCCESS STORY .....	5		
HIGHLIGHTS_MADE BY WANZL .....	7		
UPDATE YOUR HOUSEKEEPING .....	8		
OVERVIEW .....	9		
<b>01 HOUSEKEEPING .....</b>	<b>10</b>		
Chambermaid trolleys .....	12	<sup>03</sup> GS-Lobby XS .....	59
Standard chambermaid trolleys .....	12	<sup>04</sup> GS-Group .....	60
<sup>01</sup> Tantum 9 .....	12	<sup>05</sup> GS-Compact .....	61
<sup>02</sup> Basic .....	14	Luggage transport trolleys .....	62
Flexible chambermaid trolleys .....	16	<sup>06</sup> Aera 300 L .....	62
<sup>03</sup> ZP Classic .....	16	<sup>07</sup> Voyager 3000 .....	63
<sup>04</sup> ZP Eco .....	18	<sup>08</sup> Travel 300 .....	64
<sup>05</sup> ZP Clean .....	20	Guidance systems .....	65
Customised chambermaid trolleys .....	25	<sup>09</sup> Part Flex 2000 .....	65
<sup>06</sup> Mundus .....	25	<sup>10</sup> Part Line 2000 .....	66
Supplementary housekeeping products .....	34		
<sup>07</sup> hotel-max L and hotel-max S .....	34	<b>03 FOOD + BEVERAGES .....</b>	<b>68</b>
<sup>08</sup> RCW room-change trolley .....	36	Service and serving trolleys .....	70
<sup>09</sup> KS 600 luggage stands .....	37	<sup>01</sup> MBW Smart .....	70
<sup>10</sup> X-Bed additional bed .....	38	<sup>02</sup> MBW Secure .....	72
Handcarts .....	40	<sup>03</sup> Coffee station .....	74
<sup>11</sup> SW 80 .....	40	<sup>04</sup> RSVC-Comfort room service table .....	76
<sup>12</sup> SW KX .....	42	<sup>05</sup> EG 300 serving trolleys · EU 300 .....	78
<sup>13</sup> LT 240 .....	44	Bottle trolley .....	79
<sup>14</sup> GR coat rails .....	45	<sup>06</sup> FW 6 · FW 8 · FW 12 .....	79
Mobile containers and transport baskets .....	46	Tray trolley .....	80
<sup>15</sup> AL trolley with sprung base .....	46	<sup>07</sup> TBL 16 .....	80
<sup>16</sup> AL shelved laundry container .....	47	<sup>08</sup> TBL 20 .....	81
<sup>17</sup> KT3 shelved laundry trolley .....	48		
<sup>18</sup> RC/S1 .....	49	<b>04 STORAGE + SHELVING .....</b>	<b>82</b>
<sup>19</sup> RC/S8 .....	50	Service shelves .....	84
<sup>20</sup> RC/N1 .....	51	<sup>01</sup> High rack .....	84
<sup>21</sup> RC/N2 .....	52	Transport trolley .....	86
<sup>22</sup> TK-R and TK-D .....	53	<sup>02</sup> T25 .....	86
		<sup>03</sup> SP2 .....	87
<b>02 FRONT OFFICE .....</b>	<b>54</b>		
Luggage collection trolleys .....	56		
<sup>01</sup> Premium GS-Trend .....	56		
<sup>02</sup> GS-Lobby .....	58		



# Wanzl Hotel Service

## Continuing a long success story



PLATE TROLLEY 1976



TRAY TROLLEY 1984



ZP CLASSIC CHAMBERMAID TROLLEY 2012

■ **At Wanzl, we know** what people will want tomorrow. As a world market leader for shopping trolleys, we provide the right solutions for Hotel Service too. As early as the 1970s, the first Hotel Service products such as the plate and tray trolleys emerged, to optimise daily processes in the hotel and catering trade.

■ **Today, Wanzl employs** over 5,000 employees at eleven production sites worldwide, working on new business areas and products and on unusual product designs based on consistently high quality and a vast product range. The aim: perfectly satisfied customers.

***The world is changing.  
Take advantage of it!***

■ **For optimised daily hotel processes.** Wanzl's professional competence ensures effective work processes in the hotel and catering trade – and thus also the competitiveness and business success of its partners. Functional, economical and userfriendly products minimise personnel requirements and help to satisfy the high expectations and requirements of your guests.

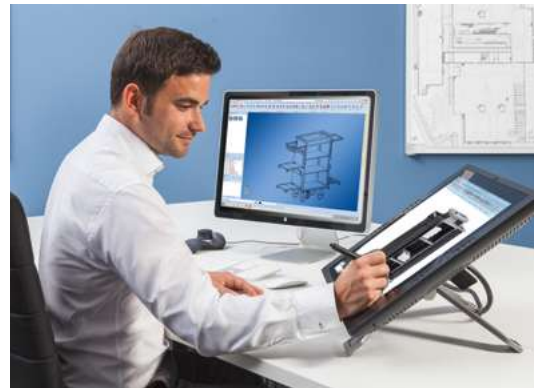


# Highlights\_MADE BY WANZL

Innovative products from a single source



IN-HOUSE CASTOR PRODUCTION



IN-HOUSE CAD DEVELOPMENT

## Production

■ **Wanzl sets the standards for production:** in all areas of production, Wanzl's quality policy results in products made from the best materials, first-class workmanship and well-finished surfaces. This ensures long-term maintenance-free use and investment security.

## Quality

■ **Wanzl sets the standard for quality** – particularly with regard to smooth motion: the castors are mounted on two maintenance-free ball bearings, have abrasion proof treads and feature steering forks with ball bearings. As a result, our chambermaid trolleys are quiet, smooth running and easy to steer.

## Innovation

■ **Wanzl sets the standards for innovation:** practical solutions from practical experience: using cutting-edge production and design technology, we create innovative, forward-looking products and constantly set new standards for handling and effectiveness.

# Update your housekeeping

As individual as your guests



OUR EXPERTS TAKE THE TIME THAT YOU NEED

■ **Our services:**

- Personal consultation with our team of experts
- Easy to reorder spare parts
- 36 months' warranty on Wanzl castors
- 10-year availability guarantee
- Extensive service partner network
- Made in Germany

## *What is important to you?*

*Stability – durability – design –  
customisation – robustness – price –  
size – flexibility*

■ **Benefit from our experience and provide your housekeeping with the best equipment.**

Our products are designed for hotel-specific challenges and conditions and provide your staff with optimal support. Especially with our chambermaid trolleys, we always have a suitable trolley for the varied requirements of the establishment. Whether standard, flexible or customised chambermaid trolley – working efficiently is not a question of price. Let us help you find your favourite products. Tell us about your needs, problems and challenges and we will work out a suitable product selection together.



**01** Housekeeping

**02** Front Office

**03** Food + Beverages

**04** Storage + Shelving



# 01 Product overview

## 01.01 – 01.06 Chambermaid trolleys



## 01.07 – 01.11 Supplementary housekeeping products



## 01.12 – 01.14 Handcarts



## 01.15 – 01.22 Mobile containers and transport baskets



22 TK-R + TK-D

# 01 Housekeeping



# 01.01 Tantum 9

**STANDARD**

*Robust space saver at a low price*

- > *Variably adjustable wire shelves*
- > *Wooden rear panel as a privacy and dirt screen*
- > *Removable side sections for space-saving storage*

**TANTUM 9**

Frame in metallic black

Illustration shows optional accessories

## 01.01 Tantum 9

■ In an international comparison, the Tantum 9 chambermaid trolley is the most economical. The model impresses with its lack of plastic parts. It is therefore more robust and hygienic. Its rear panel is made of hard-wearing, impact-resistant wood. It also serves as a privacy and dirt screen and, like the side panels and wire shelves, can be retrofitted if required. This means that its durability makes it so economical.



**TANTUM 9**  
Frame in metallic black

**Standard equipment:** solid steel structure, two height-adjustable wire shelves, as well as a U-shaped wire shelf at the top and a wooden shelf at the bottom. Two hangers for hanging laundry and rubbish bags, one of which is a bar with folding lid for closing 120 litre plastic bags. Lower bars, each with grid. A high-quality laundry bag in Anthracite and a VE 120 litre plastic bag

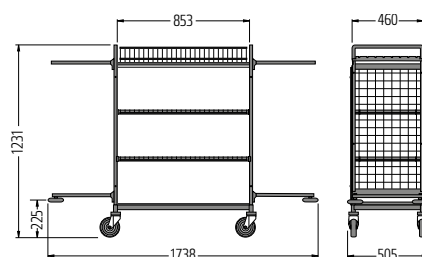
are included in the scope of delivery.

**Finish:** plastic powder coating, metallic black  
**Castors:** 4 swivel castors, diameter 125 mm with rubber tread and plastic deflector rings.

### Deflectors

#### Effective protection

Non-marking deflectors on the frame and side sections protect against interior damage.



Dimensions (mm):  
Castors diameter 125  
Loading capacity:  
Trolley shelves  
maximum 50 kg each  
Trolley side sections  
maximum 20 kg each

**Tantum 9**

Plastic powder coating, metallic black

**Prod. No.**

04.15708.95-7097

# 01.02 Basic

**STANDARD**

Housekeeping – extra economical

- > Practical equipment
- > Protect your fixtures with integrated deflectors
- > Platinum white finish


**BASIC**

Platinum white finish

Illustration shows optional equipment

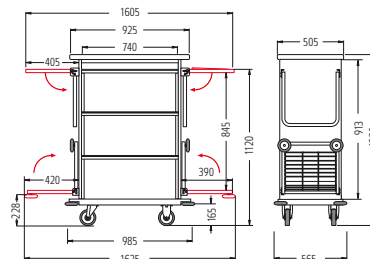
**BASIC**

Platinum white finish

Illustration shows optional equipment

## Fold-out side parts

**Provide flexibility** in confined spaces. A practical solution to save space.



Dimensions (mm):  
 Castors diameter 125  
 Loading capacity:  
 Trolley shelves maximum  
 50 kg each  
 Trolley side parts  
 maximum 20 kg each

**Standard equipment:** steel-tube design, fold-out bars for hanging laundry and rubbish bags, one of which is a bar with folding lid for closing 120 litre plastic bags.

Lower bars, each with mesh. Three fixed shelves, platinum white finish.

**Finish:** plastic powder-coating in titanium grey.

**Castors:** 2 swivel castors, 2 fixed castors with polyamide tread, castors diameter 125 mm.

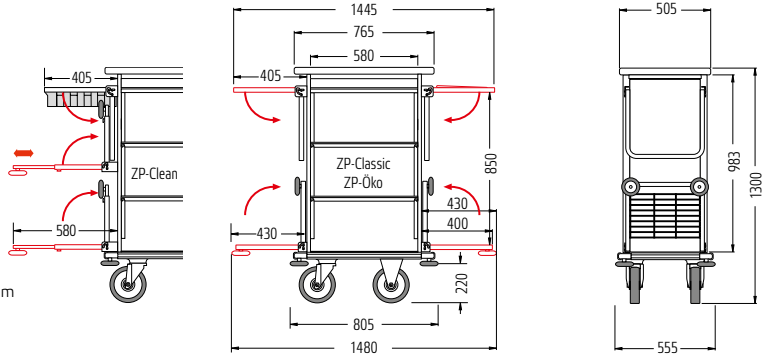
**Basic**

Platinum white finish

**Prod. No.**
**04.01240.95-0000**

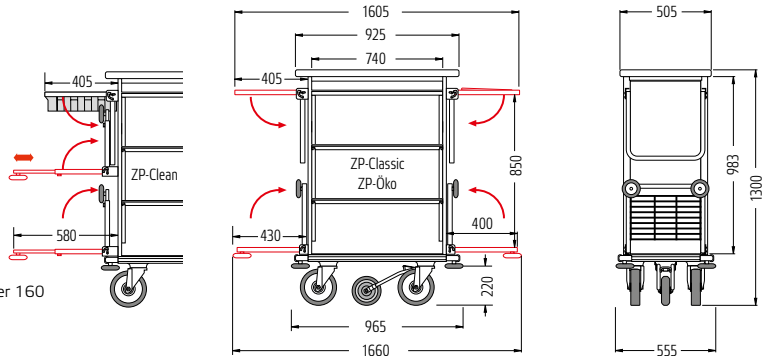
# 01.03 -01.05 Overview – Dimensions

## ZP-7 ZP Classic ZP Eco ZP Clean



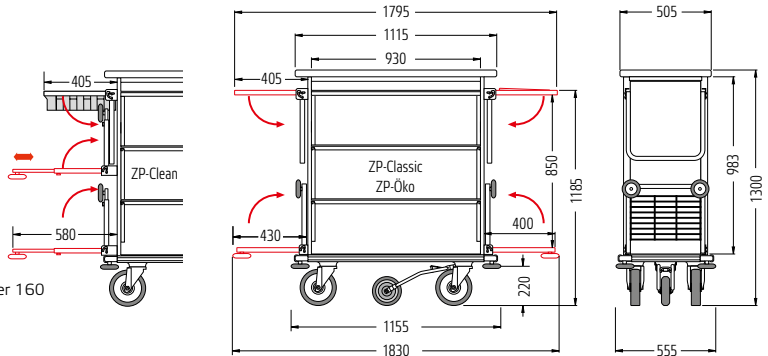
Dimensions (mm): Castor diameter 200 mm  
Loading capacity:  
Trolley shelves maximum 50 kg each  
Trolley side parts maximum 20 kg each

## ZP-9 ZP Classic ZP Eco ZP Clean



Dimensions (mm): Castors diameter 200, 5th castor diameter 160  
Loading capacity:  
Trolley shelves maximum 50 kg each.  
Trolley side parts maximum 20 kg each

## ZP-11 ZP Classic ZP Eco ZP Clean



Dimensions (mm): Castors diameter 200, 5th castor diameter 160  
Loading capacity:  
Trolley shelves maximum 50 kg each  
Trolley side parts maximum 20 kg each

# 01.03 ZP Classic

**FLEXIBLE**

*Perfect housekeeping*

- > Agile and easy to manoeuvre thanks to the 5th castor
- > With all-round bumper profile and integrated deflectors to protect your furniture and equipment
- > Adaptable: available in 3 sizes and 3 finishes



Design pend.

Finishes



## ZP-7 CLASSIC

Anthracite finish

Illustration shows optional accessories



## 01.03 ZP Classic

■ **The tried-and-tested design from Wanzl.** The special features of the Premium Classic Chambermaid trolley help the room service personnel to provide a perfect service. It can be customised as required by adding practical accessories.

**Standard equipment:** steel-tube design, fold-out bars for hanging laundry and rubbish bags, one of which is a bar with folding lid for closing 120 litre plastic bags. Lower bars, each with grid. Two fixed and two height-adjustable shelves in matching finish.

**Finish:** plastic powder-coating in titanium grey.

**Model ZP-7:** 2 swivel castors, 2 fixed castors, polyamide tread, castors diameter 200 mm.

**Models ZP-9, ZP-11:** 4 swivel castors with polyamide tread, 5th castor in the centre with rubber tread, castors diameter 160 mm.



**ZP-7 CLASSIC**  
Anthracite finish

Design pend.

### 5th castor – easy to manoeuvre

**Simply perfect:** the 5th castor allows the trolley to turn on the spot. Available for the ZP-9 and ZP-11 models.



### All-round protection for your hotel interior

**Protective feature:** Integrated deflector profile and rubber deflectors protect the hotel interior.



### Accessories: Polyester cover for rubbish bag

**Visually and functionally perfect:** "invisible" rubbish bag thanks to polyester cover. A much nicer look.



# 01.04 ZP Eco

**FLEXIBLE**

*Housekeeping meets environmental protection*

- > *Simple waste separation*
- > *2 waste separation boxes as standard*
- > *Adaptable: available in 3 sizes and 3 finishes*



Design pend.

Finishes



**ZP-11 ECO**  
Mahogany finish  
Illustration shows optional accessories

## 01.04 ZP Eco

### ■ The environmentally friendly design from Wanzl.

The special features of the Eco chambermaid trolley are particularly helpful for separating waste. It can also be upgraded with practical accessories.

**Standard equipment:** steel-tube design, fold-out bars for hanging laundry and rubbish bags, one of which is a bar with folding lid for closing 50 litre plastic bags. Lower bars, each with mesh. Two stackable waste separation boxes with lid. Two fixed and two height-adjustable shelves in matching finish.

**Finish:** plastic powder-coating in Titanium Grey.

**Model ZP-7:** 2 swivel castors, 2 fixed castors, polyamide tread, castors diameter 200 mm.

**Models ZP-9, ZP-11:** 4 swivel castors with polyamide tread, 5th castor in the centre with rubber tread, castors diameter 160 mm.



**ZP-11 ECO**  
Mahogany finish

Design pend.

### Practical clamp fastening

#### Convenient details

Clamp fastening ensures the rubbish bag is held securely.



### Waste sorting boxes as standard

#### Simple waste separation:

2 standard boxes allow easy separation of different recyclable materials.



### Adjustable shelf

#### Inserted without tools:

The shelf can be easily set at the desired height.



### Ash box accessory

#### Prevents odours:

The lid also prevents odours when providing room service.



# 01.05 ZP Clean

**FLEXIBLE**

*Ultra-hygienic housekeeping*

- > *Cleaning made easy*
- > *Retaining net for holding a cleaning tray*
- > *Extendible trays for customised storage space*



**ZP-9 CLEAN**  
 Natural oak finish  
 Illustration shows optional accessories

Finishes



## 01.05 ZP Clean

■ **The clean design from Wanzl.** The special features of the Premium Clean chambermaid trolley help make cleaning more efficient. Like all ZP models, it can be upgraded with practical accessories.

**Standard equipment:** steel-tube design. Two fixed and two height-adjustable shelves in matching finish. Right-hand side: fold-out bar for hanging a rubbish bag. Lower bar with grid and 2 stackable waste separation boxes with lids.

Left-hand side: adaptable equipment with extendible, pull-out shelves and a retaining net for cleaning materials.

**Finish:** plastic powder-coating in titanium grey.

**Model ZP-7:** 2 swivel castors, 2 fixed castors, polyamide tread, castors diameter 200 mm.

**Models ZP-9, ZP-11:** 4 swivel castors with polyamide tread, 5th castor in the centre with rubber tread, castors diameter 160 mm.



**ZP-9 CLEAN**

Natural oak finish

Illustration shows optional accessories

### Shelves and grids

#### Equipment options

##### Top

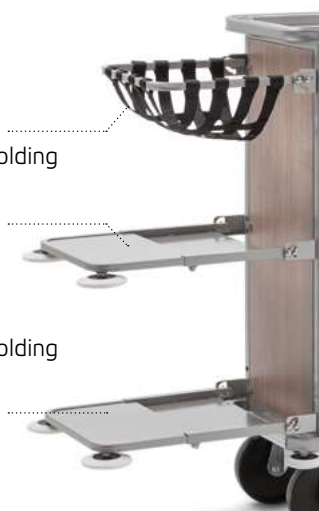
- Net for cleaning materials, folding

##### Middle options

- Extendible, fold-out shelf with locking pegs or
- Fold-out grid or
- Net for cleaning materials, folding

##### Bottom options

- Extendible, fold-out shelf or
- Fold-out grid



### Utensil bag accessory

#### Made from polyester

As practical as it gets. Required items are easily accessible and ready to hand. Whether it's guest supplies or cleaning materials, whatever you need.



## 01.03 - 01.05 Accessories – ZP

■ **Choose the items** that will match your decor from our extensive range of accessories.

### Top box

**Everything safe:** valuables can be transported safely in the lockable top box.



### Small items box

**For even better organisation:** clear arrangement of guest supplies. Wooden box for small items – transparent, painted light pearl grey or black.



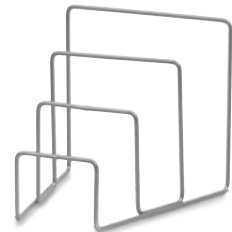
### Ash box

**Prevents odours:** the cover prevents unpleasant odours from escaping.



### Brochure holder

**Practical solution** for ensuring your image brochures are within easy reach for presentation.



### Utensils pocket

**Accessories for even more space:** for transporting additional utensils.



### Polyester cover

**Visually and functionally** perfect to keep the rubbish bag hidden.



## 01.03 - 01.05 Optional equipment – ZP

■ **The ZP series can be extended with many features.** Please feel free to contact our customer support team.

### Lockable lid

#### Structure with cover

High-quality wooden lid with handle for locking.



### Lockable roller shutter

#### Better safe than sorry

Protects your equipment from theft.



### Extra drawer

#### Storage options

for image brochures and documents.



**Lots of space** for all the utensils you need.



### Flexible mop holder

**Bulky cleaning utensils** are therefore stored safely and securely.



### Double rubbish-bag holder

**Waste separation** during cleaning made easy.



### Rubber castor

**Quiet when moving,** the perfect castors for stone flooring.



# 01.03 - 01.05 Order part

*Classic, Eco and Clean Chambermaid trolleys*



ANTHRACITE FINISH



NATURAL OAK FINISH



MAHOGANY FINISH

Models		ZP-7	ZP-9	ZP-11
Dimensions		805 x 555 x 1300	965 x 555 x 1300	1155 x 555 x 1300
		Prod. No.	Prod. No.	Prod. No.
<b>ZP Premium Classic</b>	Anthracite, natural oak, mahogany finish	<b>04.01244.95-V</b>	<b>04.01245.95-V</b>	<b>04.01246.95-V</b>
<b>ZP Premium Eco</b>	Anthracite, natural oak, mahogany finish	<b>04.01247.95-V</b>	<b>04.01248.95-V</b>	<b>04.01249.95-V</b>
<b>ZP Premium Clean</b>	Anthracite, natural oak, mahogany finish	<b>04.01257.95-V</b>	<b>04.01258.95-V</b>	<b>04.01259.95-V</b>

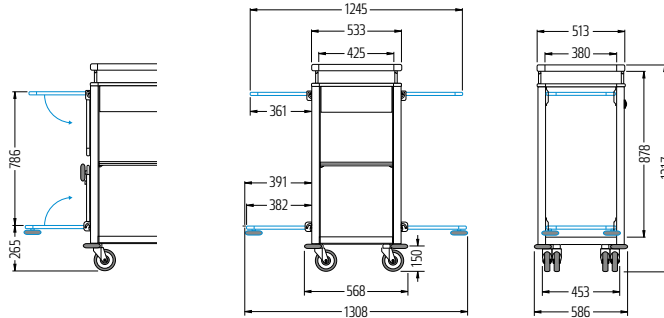
Special equipment				
Closable lid	Anthracite, natural oak, mahogany finish	☑	☑	☑
Additional shelves	Anthracite, natural oak, mahogany finish	☑	☑	☑
Drawer, plastic powder-coated in titanium grey		☑	☑	☑
Drawer compartment divider		☑	☑	☑
Closable plastic roll-down panel, in silver		☑	☑	☑
Bag holder, extended, incl. 2 polyester bags		☑	☑	☑
Double rubbish bag holder, plastic powder-coated in titanium grey		☑	☑	☑
Castors with rubber tread (1 set)		☑	☑	☑
For chambermaid trolleys with roll-down panel				
Shorter additional shelves	Anthracite, natural oak, mahogany finish	☑	☑	☑
Accessories				
Wooden box for small items, painted light pearl grey		00.21837.78-9022	00.21837.78-9022	00.21837.78-9022
Wooden box for small items, clear varnished		00.60694.78-0000	00.60694.78-0000	00.60694.78-0000
Top box, metal, plastic powder-coated in titanium grey		04.03504.73-7084	04.03504.73-7084	04.03504.73-7084
Spaces for top box on top shelf		1	1	2
Waste separation box, silver-grey plastic		04.06555.07-0000	04.06555.07-0000	04.06555.07-0000
Lid for waste separation box, silver-grey plastic		04.06668.07-0000	04.06668.07-0000	04.06668.07-0000
Ash box, metal, plastic powder-coated in titanium grey		00.22176.73-7084	00.22176.73-7084	00.22176.73-7084
Brochure holder, metal, plastic powder-coated in titanium grey		00.22289.73-7084	00.22289.73-7084	00.22289.73-7084
Bags for repeat order		Prod. No.	Prod. No.	Prod. No.
Utensils pocket, polyester, grey		00.22515.00-0000	00.22515.00-0000	00.22515.00-0000
Polyester bag, grey, 110 litres, 1 unit		00.22402.00-0000	00.22402.00-0000	00.22402.00-0000
Polyester bag, beige, 110 litres, 1 unit		00.36979.00-0000	00.36979.00-0000	00.36979.00-0000
Plastic bag, grey, 50 litres, 1 pack containing 15 units		00.22741.00-0000	00.22741.00-0000	00.22741.00-0000
Plastic bag, blue, 50 litres, 1 pack containing 15 units		00.23080.00-0000	00.23080.00-0000	00.23080.00-0000
Plastic bag, grey, 120 litres, 1 pack containing 25 units		00.24436.00-0000	00.24436.00-0000	00.24436.00-0000



# 01.06 Choose your size

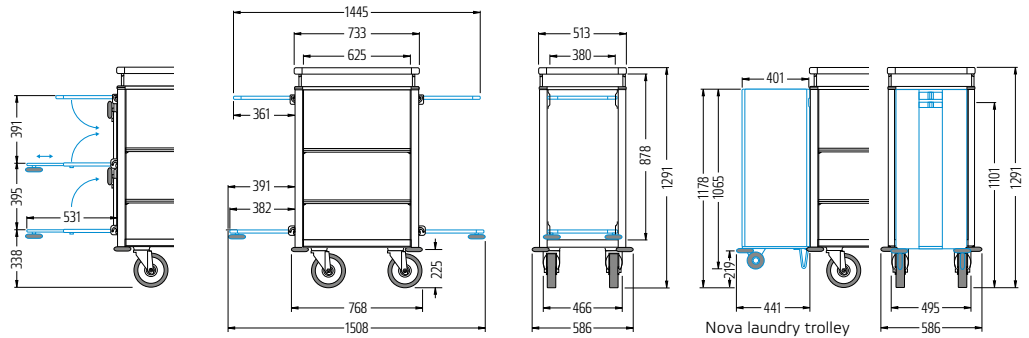
## Mundus 5

**Dimensions (mm):**  
Castors diameter 125  
**Load capacity:**  
Trolley shelves:  
maximum 50 kg each  
Trolley side sections:  
maximum 20 kg each



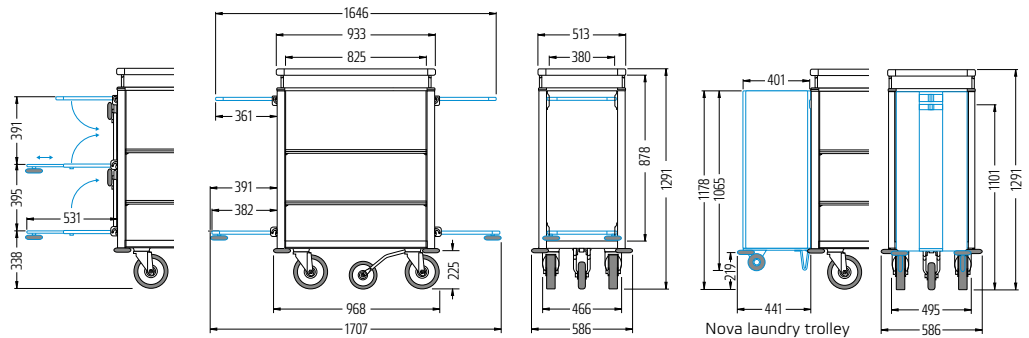
## Mundus 7

**Dimensions (mm):**  
Castors diameter 200  
Nova castor diameter 100  
**Load capacity:**  
Trolley shelves:  
maximum 50 kg each  
Trolley side sections:  
maximum 20 kg each



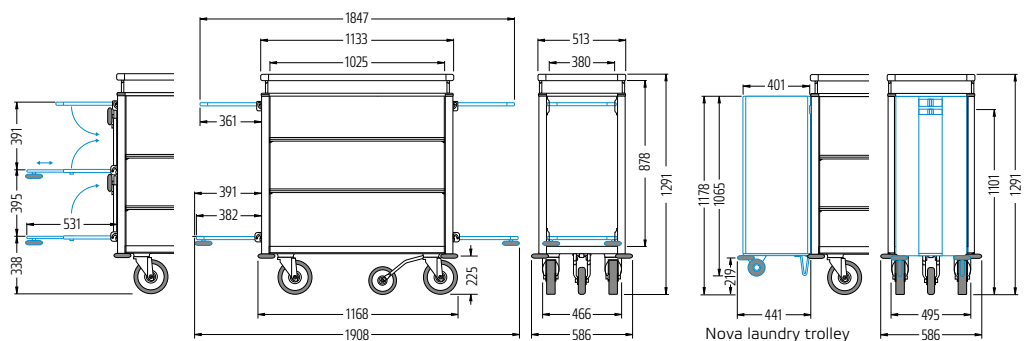
## Mundus 9

**Dimensions (mm):**  
Castors diameter 200,  
5th castor diameter 160  
Nova castor diameter 100  
**Load capacity:**  
Trolley shelves:  
maximum 50 kg each  
Trolley side sections:  
maximum 20 kg each



## Mundus 11

**Dimensions (mm):**  
Castors diameter 200,  
5th castor diameter 160  
Nova castor diameter 100  
**Load capacity:**  
Trolley shelves:  
maximum 50 kg each  
Trolley side sections:  
maximum 20 kg each



# 01.06 Mundus®

**INDIVIDUAL**

*Customised, not off the shelf.*

- > Individual, varied combination options
- > Agile and easy to manoeuvre thanks to the hybrid design
- > Inventory protection with integrated deflectors and bumper profiles



## MUNDUS 9

Anthracite finish  
Titanium grey frame colour  
Illustration shows optional equipment



MUNDUS 5



MUNDUS 5



MUNDUS 7



MUNDUS 7

## 01.06 Mundus®

■ **Housekeeping, reinvented.** Create a custom chambermaid trolley to suit your needs. You can also create "your design" from 3 frame colours, 3 textile colours and 5 finishes, which you can combine according to your requirements.

Ask for our  
**TOP SELLING VARIANTS!**



**MUNDUS 11**  
Concrete finish  
Titanium grey frame colour  
Illustration shows optional equipment



**MUNDUS 5**  
Concrete finish  
Metallic black frame colour  
Illustration shows optional equipment

**Hybrid design:** steel tube base combined with aluminium profiles, e.g. with fold-out bars for hanging laundry sacks and rubbish bags, and one bar with a folding leather cover to conceal a 120 or 50 litre plastic bag. Lower bars each come with grids and two height-adjustable removable shelves in matching finish.

**Finish:** frame with coloured plastic powder coating  
**Castors:** Mundus 9 and 11: 4 swivel castors with polyamide tread, diameter 200 mm, 5th castor in the centre with rubber tread, diameter 160 mm  
Mundus 7: 2 swivel castors, 2 fixed castors with polyamide tread, castors diameter 200 mm  
Mundus 5: 4 swivel castors with polyamide tread, diameter 125 mm



**MUNDUS 9**



**MUNDUS 9**



**MUNDUS 11**



**MUNDUS 11**

## 01.01 Chassis of the Mundus®

■ **The exterior features of the Mundus** are excellent and match perfectly with the high quality it demonstrates in its design, equipment and accessories. The whole trolley is made of robust steel which ensures high load capacity and stability, while the surrounding profiles are made from aluminium. Its hybrid structure makes the compact Mundus truly lightweight.

### Structure

**For an even more elegant appearance.** Guardrail included to prevent guest supplies from falling.



### Structure With leather cover

**High quality fibreglass reinforced leather cover.** Optional lockable cover for added protection.



### Standard drawer

**Lockable option available.** The removable pull-out drawer with soft closing provides additional storage space.



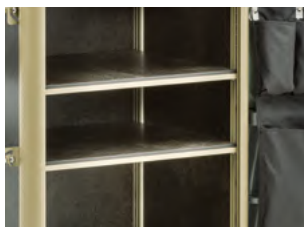
### 3P drawer

**Push & pull.** Two additional storage compartments for image brochures and documents. Practical clipboard for checklists.



### Shelves: Standard

**Variable shelves:** can be inserted without tools. The shelf can easily be set at various heights.



### Shelves for variant with roller shutter

**Customisable solutions:** special shelves for variants with lockable roller shutter.



### Aluminium profile

**Lightweight design:** the Mundus is easy to manoeuvre thanks to its aluminium profile.



### Lockable roller shutter

**A lockable system** operated using an RFID lock is only possible in combination with a Standard drawer.



### 5th castor – easy to manoeuvre

**Simply perfect:** the 5th castor allows the trolley to turn on the spot.



### Protection for your interior

**Protective feature:** rubber deflectors protect the hotel interior.



## 01.06 Customise the side sections

■ **The Mundus** can be equipped individually. Nothing is off the shelf, it is all tailor made. The trolley comes with a long list of practical equipment. Instead of standard configurations, we offer variety, meaning that the chambermaid trolley is always ready for use and is a perfect fit for any job in every establishment.

Configure your  
Mundus online now!  
[www.wanzl.com/mundus](http://www.wanzl.com/mundus)

### Soiled laundry sack holder

**Standard** or with an elegant fabric covering.



### Leather cover for dirty laundry bag holder

**Clean solution:** on request, with folding leather cover as a finish.



### Drawer compartment divider

**Variable compartment dividers** organise the guest supplies.



### Nova laundry trolley

**The laundry trolley** can be detached from the Mundus using a handle, allowing it to be taken into rooms separately.



### Grid tray

**Effective protection** for your interior thanks to deflectors.



### Removable tray

**Extendable trays** for customised storage space.



### Rubbish bag holder

**Fold-out bar** for hanging a plastic sack, with folding leather cover as a finish.



### Double rubbish-bag holder

**Waste sorting** made truly easy when providing housekeeping services.



### Fabric covering

**Choose from three colours.** Visually and functionally perfect with Velcro fastening.



### Pushing handle

**Simple and comfortable operation** in confined spaces thanks to the optional pushing handles.



## 01.06 Accessories – Mundus® even more unique

■ **The Mundus chambermaid trolley** can be expanded with practical accessories if desired. The top box for guest supplies, laundry bags and waste separation boxes are just some of the optional features available to make housekeeping easier.

### Top box

**Everything safe:** valuables can be transported safely in the lockable top box.



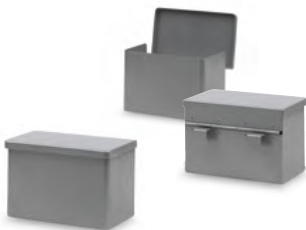
### Small items box

**For even better organisation:** clear arrangement of guest supplies. Wooden box for small items – transparent, painted light pearl grey or black.



### Ash box

**Prevents odours:** the cover prevents unpleasant odours from escaping.



### Brochure holder

**Practical solution** for ensuring your image brochures are within easy reach for presentation.



### Cleaning tray holder

**Transport cleaning materials safely** with the cleaning tray holder.



### Console for five compartment bottle holder

**Safely stored** and within easy reach.



### Waste separation box

**Simple waste separation:** 2 boxes allow easy separation of different recyclable materials.



### Mop holder

**The user-friendly,** flexible holder system keeps everything under control.



### Mundus utensils pocket

**Accessories for even more space:** for transporting additional utensils.



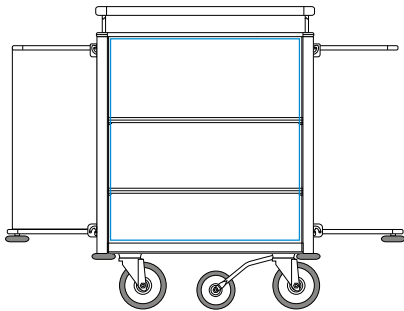
### Polyester bag

**Anthracite, easily removable.** With optional zip closure.

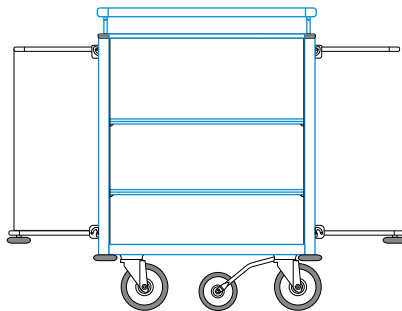


## 01.06 Come up with your design

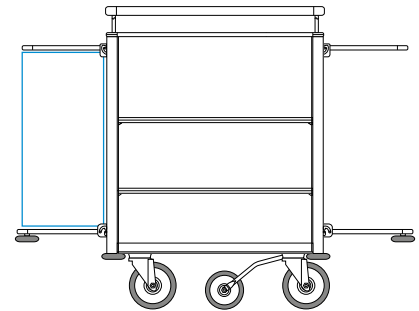
■ **Customised, instead of off the shelf.** Choose from four sizes, five finishes, three frame colours and three textile colours. True variety and multiple individualised combinations, all in keeping with the interior and the unique design.



1. CHOOSE YOUR FINISH



2. CHOOSE YOUR FRAME COLOUR



3. CHOOSE YOUR TEXTILE COLOUR

### 5 finishes

■ **The right fit for any interior style.** Choose your favourite from five premium finishes.



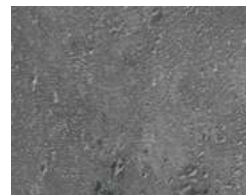
MAHOGANY



NATURAL OAK



ANTHRACITE CERAMIC



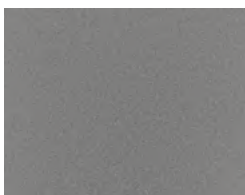
CONCRETE



ANTHRACITE

### 3 frame colours

■ **The high quality finished surfaces,** which are available in three different colours, not only allow for years of maintenance-free use but also ensure that your investment retains its value.



TITANIUM GREY



METALLIC BLACK



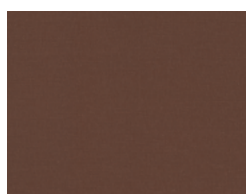
METALLIC GOLD

### 3 textile colours

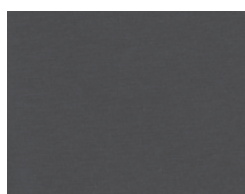
■ **The removable, washable fabric covering** is available in three different colours.



BEIGE



BROWN



ANTHRACITE

## 01.06 Ordering section

Models	Mundus 5	Mundus 7	Mundus 9	Mundus 11
Dimensions	533 x 586 x 1217	733 x 586 x 1291	933 x 586 x 1291	1133 x 586 x 1291
	Prod. no.	Prod. no.	Prod. no.	Prod. no.
<b>Mundus – 5 finishes, 3 frame colours</b>	<b>04.08020.95-V</b>	<b>04.08025.95-V</b>	<b>04.08030.95-V</b>	<b>04.08035.95-V</b>

Body				
Standard shelves, 2 units	77.42641.95-XXXX	77.75406.95-XXXX	77.39924.95-XXXX	77.75293.95-XXXX
Shelves for variant with roller shutter, 2 units	77.42415.95-XXXX	77.10097.95-XXXX	77.09984.95-XXXX	77.09871.95-XXXX
Standard drawer	77.34505.95-XXXX	77.33940.95-XXXX	77.33262.95-XXXX	77.33601.95-XXXX
Standard drawer, lockable	77.34392.95-XXXX	77.34053.95-XXXX	77.33375.95-XXXX	77.33714.95-XXXX
3P drawer (Mundus 7: only with clipboard)	-	77.80614.95-XXXX	77.81066.95-XXXX	77.81405.95-XXXX
3P drawer, lockable	-	77.80840.95-XXXX	77.81179.95-XXXX	77.81518.95-XXXX
Roller shutter, lockable, only in combination with Standard drawer	77.36878.95-0000	77.36652.95-0000	77.21284.95-0000	77.36765.95-0000
Structure	77.91236.95-0000	77.91349.95-XXXX	77.91462.95-XXXX	77.91575.95-XXXX
Cover for structure	77.05140.95-0000	77.04914.95-0000	77.04688.95-0000	77.04236.95-0000
Cover for structure, lockable	77.08869.95-0000	77.08756.95-0000	77.08643.95-0000	77.08530.95-0000
Bonded-on rubber castors, set, 200 mm (Mundus 7: 2 fixed/2 swivel castors)	-	60.72925.00-0000	60.72699.00-0000	60.72699.00-0000
Identical width castors, set, 200 mm	-	60.45776.00-0000	60.45776.00-0000	60.45776.00-0000

Side sections				
Standard soiled laundry sack holder	77.73264.95-XXXX	77.73264.95-XXXX	77.73264.95-XXXX	77.73264.95-XXXX
Soiled laundry sack with fabric covering	77.11900.95-XXXX	77.11900.95-XXXX	77.11900.95-XXXX	77.11900.95-XXXX
Cover for soiled laundry sack holder	77.60151.07-0000	77.60151.07-0000	77.60151.07-0000	77.60151.07-0000
Detachable Nova laundry trolley, incl. fabric covering, laundry sack not included	-	77.14848.95-XXXX	77.14848.95-XXXX	77.14848.95-XXXX
Centre grid tray	77.66027.95-XXXX	77.66027.95-XXXX	77.66027.95-XXXX	77.66027.95-XXXX
Bottom grid tray	77.22861.95-XXXX	77.22861.95-XXXX	77.22861.95-XXXX	77.22861.95-XXXX
Standard rubbish bag holder, incl. cover	77.23087.95-XXXX	77.23087.95-XXXX	77.23087.95-XXXX	77.23087.95-XXXX
Standard double rubbish bag holder, incl. cover	77.15516.95-XXXX	77.15516.95-XXXX	77.15516.95-XXXX	77.15516.95-XXXX
Centre tray, extendable	-	77.73372.73-XXXX	77.73372.73-XXXX	77.73372.73-XXXX
Bottom tray, extendable	-	77.73711.73-XXXX	77.73711.73-XXXX	77.73711.73-XXXX
Fabric covering for each side	77.19099.95-XXXX	77.19099.95-XXXX	77.19099.95-XXXX	77.19099.95-XXXX

Accessories				
Waste separation box without cover, silver-grey plastic, 40 litre	04.06555.07-0000	04.06555.07-0000	04.06555.07-0000	04.06555.07-0000
Lid for waste separation box, silver-grey plastic	04.06668.07-0000	04.06668.07-0000	04.06668.07-0000	04.06668.07-0000
Wooden box for small items, painted light pearl grey	00.21837.78-9022	00.21837.78-9022	00.21837.78-9022	00.21837.78-9022
Wooden box for small items, painted black	00.21837.78-7097	00.21837.78-7097	00.21837.78-7097	00.21837.78-7097
Wooden box for small items, clear varnished	00.60694.78-0000	00.60694.78-0000	00.60694.78-0000	00.60694.78-0000
Top box, metal, plastic powder coating in titanium grey	04.03504.73-7084	04.03504.73-7084	04.03504.73-7084	04.03504.73-7084
Spaces for top box/small items box on top shelf	1/1	1/2	1/3	2/3
Brochure holder, metal, plastic powder-coated in titanium grey	00.22289.73-7084	00.22289.73-7084	00.22289.73-7084	00.22289.73-7084
Ash box, metal, plastic powder-coated in titanium grey	00.22176.73-7084	00.22176.73-7084	00.22176.73-7084	00.22176.73-7084
Mundus utensils pocket, polyester, grey	77.33267.00-0000	77.33267.00-0000	77.33267.00-0000	77.33267.00-0000
Polyester bag, anthracite, 110 litres, 1 unit	00.22402.00-0000	00.22402.00-0000	00.22402.00-0000	00.22402.00-0000
Polyester bag, anthracite, with zip fastener, 110 litres, 1 unit	77.58951.00-0000	77.58951.00-0000	77.58951.00-0000	77.58951.00-0000
Bottle divider unit for drawer	77.58707.73-7035	77.58707.73-7035	77.58820.73-7035	77.58933.73-7035
Mop holder (for self-installation)	04.08815.95-0000	04.08815.95-0000	04.08815.95-0000	04.08815.95-0000
Console for mop holder	77.67413.95-XXXX	77.67413.95-XXXX	77.67413.95-XXXX	77.67413.95-XXXX
Cleaning tray holder	77.67865.95-XXXX	77.67865.95-XXXX	77.67865.95-XXXX	77.67865.95-XXXX
Console incl. five compartment bottle holder	77.62087.95-XXXX	77.62087.95-XXXX	77.62087.95-XXXX	77.62087.95-XXXX
Metal guard rail back panel	77.90219.95-0000	77.90106.95-0000	77.89993.95-0000	77.89880.95-0000
Drawer compartment divider	77.32305.73-7035	77.32305.73-7035	77.32305.73-7035	77.32305.73-7035
Pushing handle	77.32757.95-XXXX	77.32757.95-XXXX	77.32757.95-XXXX	77.32757.95-XXXX



## 01.06 Individual sections of the Mundus®

■ **The Mundus is highly customisable** and always boasts surprisingly varied new looks. Each Mundus is a unique, personalised item designed to meet all standards and match the corporate identity of any company.



**1 STRUCTURE**  
with cover, lockable

**2 DRAWER**  
3P, push & pull

**3 SHELF**  
can be positioned variably

**4 NOVA LAUNDRY TROLLEY**  
detachable

**5 ALUMINIUM PROFILE**  
lightweight structure

**6 5TH CASTOR**  
for extreme manoeuvrability

**7 DEFLECTORS**  
Protection for your interior

**8 FABRIC COVERING**  
for each side

**9 LEATHER COVER**  
for rubbish bag holder

# 01.07 hotel-max

*For invisible housekeeping*

> *“Invisible” assistants for disturbance-free housekeeping*

> *For hotels with an upmarket ambience*

> *Compact, manoeuvrable and stylish*



**HOTEL-MAX L**  
Service trolley with service basket

Pat. pend.



**HOTEL-MAX S**  
Service trolley with service basket

Pat. pend.

## Standard equipment

### hotel-max S and hotel-max L service trolleys:

The chassis consists of a round-tube design with plastic powder coating. There is a wire storage basket and the wire bottom tray holds the service basket; hotel-max L features particularly generous dimensions.

**Castors:** made of plastic with wear-resistant tread.

### hotel-max S and hotel-max L service baskets:

Plastic with woven willow look. Food-safe, heat-resistant to 70°C and UV stable. Washable and suitable for machine washing.

### Extras for the hotel-max L service basket:

There are 2 basket heights, each equipped with a small item basket. Additionally, the shorter version\* has one compartment divider.

\* Height 440 mm

## 01.07 hotel-max S and hotel-max L

■ **Elegant and manoeuvrable multi-function transporters by Wanzl.** The hotel-max S and the hotel-max L do their work as a constant, "invisible" companion to the chambermaid and thus prevent impairment of the overall impression given by hotels with an upmarket ambience.

### Collapsible to save space

The **hotel-max S** and **hotel-max L** service trolleys can be folded down to occupy very little space when they are not needed. It really does not get any more practical. Both very quickly become indispensable.



HOTEL-MAX L

HOTEL-MAX S

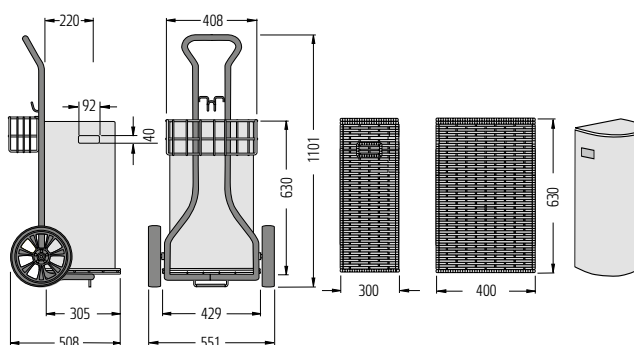
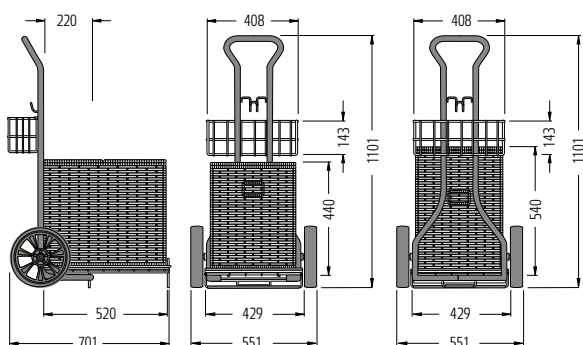
### Lots of space for cleaning requirements

Everything you need for housekeeping can be comfortably accommodated in the wire basket on the control handle of the hotel-max.



### Particularly gentle

Plastic profiles ensure additional protection on all surfaces. The double edging wire offers the servicebasket additional support.



hotel-max L	Prod. No.
hotel-max service trolley* W 551 x D 701 x H 1101 mm	04.73112.96-0001
Service basket for hotel-max with small item basket and compartment dividers W 390 x D 520 x H 440 mm	05.47348.07-0001
Service basket for hotel-max with small item basket, without compartment dividers W 390 x D 520 x H 540 mm	05.53563.07-8025
	05.53563.07-9005

hotel-max S	Prod. No.
hotel-max service trolley* W 551 x D 508 x H 1101 mm	04.72999.96-0001
Service basket for hotel-max W 400 x D 300 x H 630 mm	05.55258.07-9005

\* Pat. pend.

# 01.08 RCW Room change trolley

*A professional solution for changing rooms*

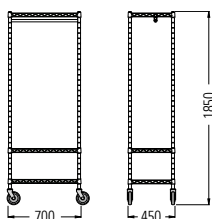
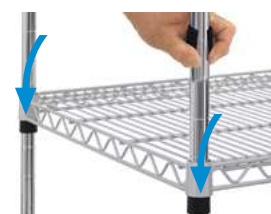
- > *Quick and easy*
- > *With clothes rail and 2 wire shelves as standard*
- > *Matching clothes hangers optional*



**RCW**  
Room-change trolley

## Variable installation of the shelves

With plastic clamping bushes in the 50 mm grid, the shelves can be flexibly adjusted to the desired height.



## Suspended coat rail

**For protecting items during transport:** Provides a professional way for guests to change rooms or living quarters quickly and easily.



**Standard equipment:** Uprights with end caps. Plastic clamping bushes for mounting the wire shelves at 50 mm intervals. Wire shelves in coloured plastic powder coating, white, wheel castor diameter 125 mm.

## Mobile

**High-quality swivel castors,** 2 with brakes, guarantee stability and mobility as required. Castor diameter: 125 mm.



Room change trolley RCW	Prod. No.
With coat rail and 3 wire shelves	04.30011.10-0000
Accessories	
Clothes hanger made from wire, with high-gloss chrome plating	00.79265.10-0000

# 01.09 KS 600 luggage stand

*Somewhere for every item of luggage*

- > *An indispensable feature of every guest room*
- > *Rear bar to prevent slipping*
- > *Folding mechanism for space-saving storage*



**KS 600**  
luggage stands, folded



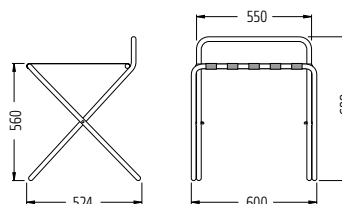
**KS 600**  
high-gloss, chrome-plated



**KS 600**  
flash gold-plated

## *Protects the interior décor in your hotel*

The **high bar** and the extension of the rear feet ensure the necessary distance is kept from the wall to avoid damage.



**Standard equipment:** easy-to-handle tube frame with bar at back to prevent slipping. Folding mechanism for space-saving storage. Heavy-duty black belts prevent damage to cases.

**Finishes:** choice of high-gloss chrome or flash gold-plated.

### KS 600 luggage stands

KS 600 high-gloss, chrome-plated  
KS 600 flash gold-plated

### Prod. No.

04.01922.10-0000  
04.01922.58-0000

# 01.10 X-Bed additional bed

*An extra bed for use anywhere.*

- > *Sturdy metal bed*
- > *Fast-folding frame*
- > *Mobility with four swivel castors*

120 kg ↓



## X-BED

Illustration shows optional accessories

## 01.10 X-Bed additional bed

■ **The X-Bed provides pleasant resting comfort** and has a seat height of approx. 55 cm. The grid support allows for perfect ventilation of the mattress.



### X-BED

Secured with the belt, the X-Bed can be stored safely to save space, or moved away.

### Automatic folding mechanism with lock



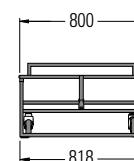
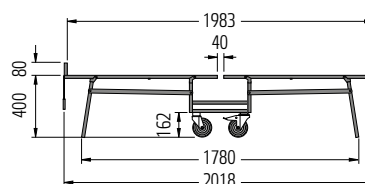
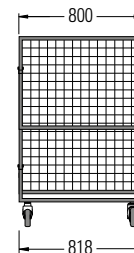
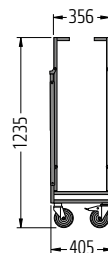
**Easy and quick to set up** thanks to the handy automatic folding mechanism with lock.

**Standard equipment:** sturdy, high-quality square metal frame, grid support, automatic folding mechanism with lock, maximum weight supported is 120 kg, weighs 23 kg.

**Finish:** plastic powder coating in metallic black

**Castors:** 4 swivel castors, incl. 2 with brakes, castor diameter 125 mm.

**Accessories:** foldable mattress made of highly stable polyether foam, suitable for hotel use (can be sterilised). Durable anthracite-coloured cover with quilted surface, removable and washable.



X-Bed	Prod. No.
Plastic powder coating, metallic black	04.15256.73-7097
Accessories	
Polyether foam mattress, 80 x 200 x 15 cm	04.15482.07-0000

# 01.11 SW 80 handcart

*Sorting laundry made easy*

- > 1-3 modules with bags in 4 colours
- > Pre-sorting to save mix-ups
- > Robust rubber rings for securing sacks

180 kg ↓



SW 3/80

Fabric bags in blue, red and apricot



## 01.11 SW 80 handcart

■ **Laundry pre-sorting** in the versions with 2 or 3 modules thanks to different coloured bags. These nifty trolleys make sure that all laundry is correctly sorted for washing.

80 kg ↓



**SW 1/80**  
Fabric bag in mint

80 kg ↓



**SW 1/80**  
Polyester bag, grey

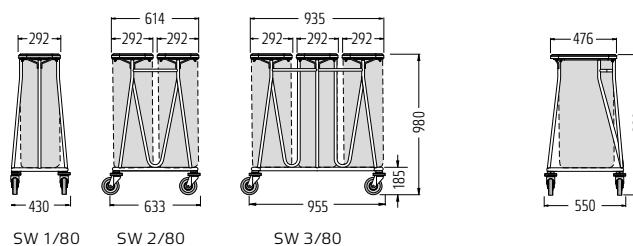
160 kg ↓



**SW 2/80**  
Fabric bags in red and blue

### Securely fastened

**Robust rubber rings** provide simple and secure fastening of the bags.



**Standard equipment:** sturdy steel tube design. Chassis with welded grid as support for enhanced stability. Plastic lid with handy opening grip. Bag secured with flexible rubber rings to prevent slipping.

**Finish:** plastic powder-coating in titanium grey.

**Castors:** 4 swivel castors, with plastic deflector rings and rubber treads, castor dia. 125 mm.

SW 80 handcart	Prod. No.
SW 1/80, for hanging 1 bag (bag not included)	04.08928.75-7084
SW 2/80 for hanging 2 bags (bags not included)	04.09041.75-7084
SW 3/80 for hanging 3 bags (bags not included)	04.09154.75-7084
<b>Accessories</b> (bags for initial and repeat orders)	
1 fabric bag, 80 litres, red	00.70540.00-0000
1 fabric bag, 80 litres, blue	00.60935.00-0000
1 fabric bag, 80 litres, apricot	00.61613.00-0000
1 fabric bag, 80 litres, mint	00.59692.00-0000
1 polyester bag, 80 litres, grey	77.69618.00-0000

# 01.12 SW KX handcart

*The agile model for hotels of every size*

- > *Smart folding mechanism for space-saving storage*
- > *Flexible configuration with 2 bag variants*
- > *Sturdy steel tube design with grid attached as support surface*



## 01.12 SW KX handcart

■ **A flexible laundry trolley for all situations.** The practical handcart, including a sturdy polyester bag, can be ordered in two sizes to suit individual requirements. The SW 145 KX can also be equipped with a plastic bag to transport rubbish.

100 kg ↓



**SW 145 KX**  
With plastic bag and holder

100 kg ↓



**SW 145 KX**  
Can be folded to save space

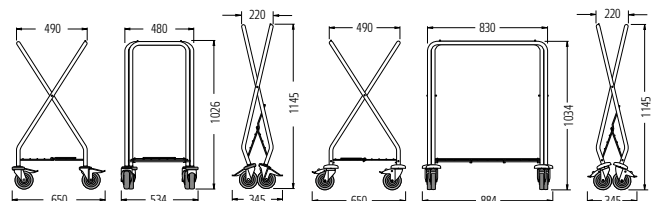
100 kg ↓



**SW 290 KX**  
Can be folded to save space

### It couldn't be easier

The hard-wearing hook and loop fastener secures the polyester bag in position nice and simply.



**Standard equipment:** sturdy steel-tube design with mesh attached as support surface. Hook-and-loop fastener for polyester bag and flat-steel retainer bar for plastic bag.

**Finish:** plastic powder coating, metallic black.

**Castors:** 4 swivel castors with plastic deflector rings, 2 of which have brake fixings and rubber tread, castor diameter 125 mm.

SW 145 KX Handcart	Prod. No.
Basic fixture with polyester bag and hook-and-loop fastener	04.03843.95-7097
Basic fixture with plastic bag and holder	04.03618.95-7097
<b>Accessories</b>	
Holder for plastic bag, incl. fixings	04.03956.52-0000
<b>Bags for repeat order</b>	
1 polyester bag, 145 litres, grey	77.94057.00-0000
1 pack of plastic bags, 120 litres, grey (1 pack = 25 units)	00.24436.00-0000
SW 290 KX Handcart	Prod. No.
Basic fixture with polyester bag and hook-and-loop fastener	04.15934.95-7097
<b>Accessories</b>	
<b>Bags for repeat order</b>	
1 polyester bag, 290 litres, grey	77.95527.00-0000

# 01.13 LT 240 handcart

XXL laundry service

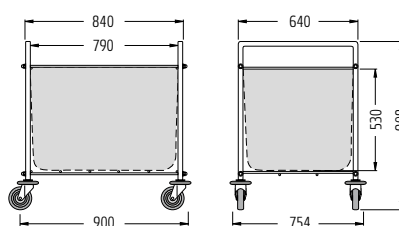
- > Extra-large laundry bag, 240 L
- > Integrated diameter 140 mm deflectors to protect the interior décor
- > High load capacity, stable and durable



LT 240  
Handcart

## Practical hook-and-loop fastening

**It couldn't be easier:** the non-wearing hook-and-loop fastener secures the polyester bag in position.



**Standard equipment:** steel-tube design with sturdy mesh as support surface. Practical all-round hook-and-loop fastener for securing the large polyester bag, optionally with cover.

**Finish:** plastic powder coating, metallic black.

**Castors:** 4 swivel castors, diameter 125 mm with rubber tread, plastic deflector rings.

LT 240 handcart	Prod. No.
With 1 polyester bag, grey, as standard	04.13900.95-7097
<b>For repeat orders</b>	
Polyester bag, grey, 240 litres	00.58562.00-0000
Polyester bag, grey, 240 litres, with cover	00.58563.00-0000

# 01.14 GR Clothes stand

*A pared-down form with unsurpassed functioning*

- > *Can be nested to save space*
- > *Easy to move on castors, brakes optionally available*
- > *With practical hat rack*

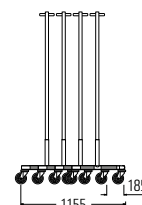
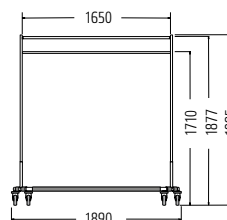


GR  
Coat rails, nesting

GR  
Clothes stand  
Illustration shows optional accessories

## Right at the top

**Practical hat rack:** perfect storage, quickly available to hand again.



**Standard equipment:** attractive steel tubing design with coat rail and practical hat rack. Conical chassis, can be nested to save space.

**Finish:** chassis with plastic powder coating in titanium grey, other parts high-gloss chrome-plated.

**Castors:** 4 swivel castors with rubber tread, supplied with plastic deflector rings as standard, castor wheel diameter 125 mm.

### Clothes stand GR

With hat rack

With hat rack and 2 brakes

### Accessories

Clothes hanger made from wire, with high-gloss chrome plating

### Prod. No.

04.02713.95-7084

04.02713.95-0001

00.79265.10-0000

# 01.15 AL trolley with sprung base

*A laundry trolley for smooth service*

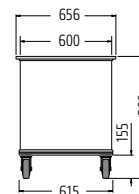
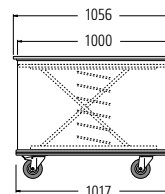
- > Robust trolley made from aluminium
- > With automatic height adjustment of the base shelf thanks to a sturdy steel spring
- > Can be used universally



AL TROLLEY WITH  
SPRUNG BASE

## Perfect position

A sturdy steel spring ensures that the base shelf is always at the ideal height, irrespective of the load.



**Standard equipment:** robust trolley made of anodised aluminium. The base shelf is raised and lowered automatically depending on the weight of the transported goods. This enables staff to load and unload the trolley comfortably and without straining their back.

**Castors:** 4 swivel castors, incl. 2 with brakes, castor diameter 125 mm.

AL sprung-base trolley

With adjustable base shelf

Prod. No.

04.06216.45-0000

# 01.16 AL shelved laundry container

*A mobile container for transporting laundry*

- > *Fold-out container shelves enable easy handling*
- > *All-round plastic bumper profile*
- > *Plastic roll-down panel as standard*



AL SHELVED LAUNDRY CONTAINER

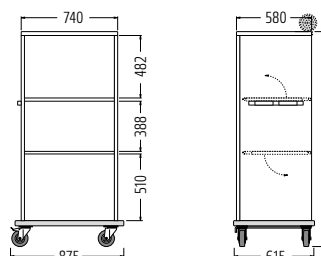


Transporting clean linen

With roll-down front panel

## Mobile container

For transporting large volumes of dirty and clean laundry, which saves staff unnecessary journeys. The fold-out container shelves can be easily handled, transforming the AL shelved laundry container into a trolley for collecting used laundry in next to no time.



**Standard equipment:** sturdy construction made of anodised aluminium. Surrounding plastic bumper. Roll-down front panel made of plastic as standard. Two 90° hinged shelves.

**Horizontal position:** for clean laundry.

**Vertical position:** for dirty laundry.

**Castors:** 4 swivel castors, incl. 2 with brakes, castor diameter 125 mm.

AL shelved laundry container

Incl. roll-down front panel

Prod. No.

04.05877.45-0000

# 01.17 KT3 shelved laundry trolley

*Transport trolley for clean laundry*

- > *Adjustable shelves for easy handling*
- > *Agile and easy to manoeuvre thanks to the 5th castor*
- > *Two pushing handles*



**KT3 SHELVED LAUNDRY TROLLEY**  
Illustration shows optional accessories

## Handles fitted as standard

**Simple and comfortable operation** in confined spaces thanks to the two pushing handles.



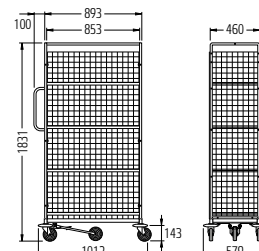
## Deflectors

**Non-marking deflectors** protect your interior décor from damage.



## 5th castor Simply perfect:

The **5th castor** allows the trolley to turn on the spot.



**Standard equipment:** chassis made from square tubing. Side panels made up of square tubing frame with wire lattice, inserted into chassis and screwed into place. 4 adjustable shelves. 4 large deflectors to protect the furniture and equipment.

**Finish:** high-gloss, galvanised, chrome-plated.

**Castors:** 4 swivel castors 125 mm, 5th castor diameter 125 mm, fitted in the centre for easy manoeuvrability. The shelved laundry trolley can turn on the spot.

KT3 shelved laundry trolley	Prod. No.
High gloss, galvanised, chrome-plated	06.00231.50-V310



# 01.18 RC/S1 mobile container

With plastic chassis

- > Fully enclosed design
- > Doors with additional safety hooks for added security
- > Lightweight design with plastic chassis



## RC/S1

Basic model with height of 1850 mm including wire shelf (accessories)

## Retaining hook

**Additional door fixing** makes unauthorised access more difficult.



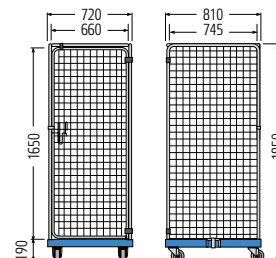
## Locking

**The metal lock bar** can also be secured with a padlock, if required.



## Safe transport

With sophisticated technology and good handling characteristics, the fully enclosed and theft-proof RC/S1 caters to the multifaceted requirements of the hotel trade.



**Standard equipment:** chassis made of plastic, with wide supporting rails. Container structure made of round-tube frame with wire mesh, integrated clips. Door with plastic hinges. Opening angle 270°.

**Finish:** high-gloss, galvanised, chrome-plated.

**Castors:** 2 fixed castors, 2 swivel polyamide castors, castor wheel diameter 108 mm.

RC/S1 mobile container	Prod. No.
Fully enclosed, height 1850 mm	06.05537.95-0130
Accessories	
Wire shelf	28.07345.50-0000
Wire shelf, with upward lip on one side	28.09040.50-0000

# 01.19 RC/S8 mobile container

*A mobile transport container*

- > Fully enclosed design
- > Doors with lockable bar
- > Optional: adjustable hook-in grate



**RC/S8**  
mobile container  
Illustration shows optional accessories

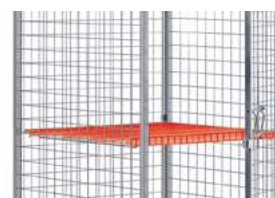
## Locking

The locking mechanism can be secured with a padlock if required.



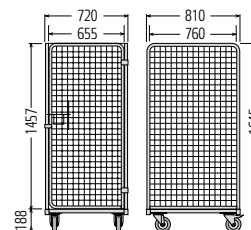
## Wire shelf (optional)

The wire shelf can be attached at an interval of 50 mm. Available in flat variant, or with one side with upward lip.



## The solution for many different jobs

**Ideal for transport within the hotel** – High-value goods can also be transported securely from A to B thanks to the fully enclosed design.



**Standard equipment:** metal chassis. Square tube frame with wire support surface, flat steel reinforcing strips. Container structure made of square tube frame with wire mesh, bolted and riveted. Door with metal hinges. Opening angle 270°.

**Finish:** high-gloss, galvanised, chrome-plated.

**Castors:** 2 fixed castors, 2 swivel polyamide castors, castor wheel diameter 125 mm.

RC/S8 mobile container	Prod. No.
Fully enclosed, height 1645 mm	06.21639.50-0000
Accessories	
Wire shelf	28.22981.50-0000
Wire shelf, with upward lip on one side	28.22980.50-0000

# 01.20 RC/N1 mobile container

*Light design*

- > Can be nested to save space
- > Locking mechanism suitable for padlock
- > Hinged support surface



**RC/N1**  
Basic model with additional wire shelf (accessory)

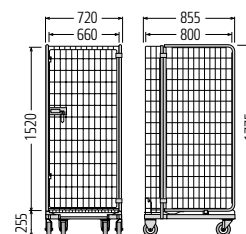
*Can be nested to save space*

**Space requirement in row**  
Per mobile container 200 mm  
10 mobile containers 2,655 mm  
50 mobile containers 10,655 mm



## Locking

The locking mechanism can be secured with a padlock if required.



**Standard equipment:** square tube frame chassis, welded. Hinged support surface made of wire mesh. Container structure made of round-tube frame with wire mesh and plastic hinges. Door opening angle 270°.

**Finish:** high-gloss, galvanised, chrome-plated.

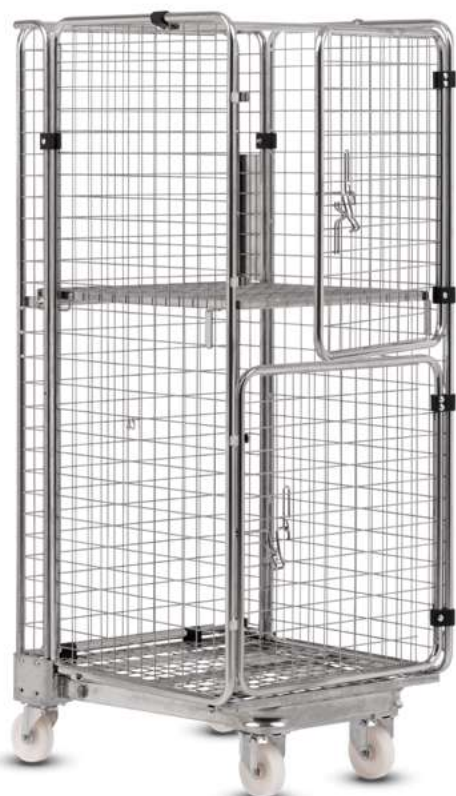
**Castors:** 2 fixed castors, 2 swivel polyamide castors, castor wheel diameter 125 mm.

RC/N1 roll cage	Prod. No.
Nesting	06.16386.50-V001
<b>Accessories</b>	
Wire shelf	00.97494.50-0000

# 01.21 RC/N2 mobile container

*Nesting container variant*

- > Effortless collapsing and nesting facilitates storage
- > 2-part door, opened separately
- > Wire shelf and coat rail as standard



**RC/N2**  
Basic model with hinged wire shelf (standard)

*Can be nested to save space*

#### Space requirement in row

Per mobile container	200 mm
10 mobile containers	2,655 mm
50 mobile containers	10,655 mm



#### Clothes rail

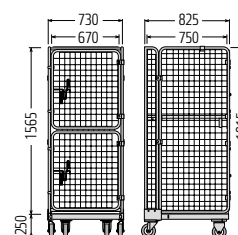
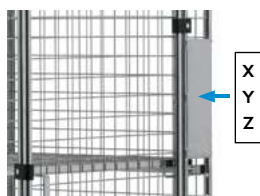
##### Hinged.

Made of round tube with plastic hinge.



#### Plate

**Made of metal.** For stickers, labelling, etc.  
Size 114 x 323mm



**Standard equipment:** square tube frame chassis, curved. Hinged support surface made of square tube frame with wire mesh, reinforced with flat steel strips. Container structure made of round-tube frame with wire mesh and plastic hinges. 2-part door with opening angle 270°.

**Finish:** high-gloss, galvanised, chrome-plated.

**Castors:** 2 fixed castors, 2 swivel polyamide castors, castor wheel diameter 125 mm.

#### RC/N2 mobile container

Nesting,  
with wire shelf and coat rail as standard

#### Prod. No.

06.17515.50-V001

# 01.22 TK-R, TK-D transport baskets

Mobile transport baskets, either open or with a lid

> *Narrow mesh wire baskets*

> *2 versions*

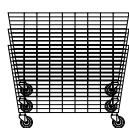
> *TK-R with bumper, TK-D with lid*



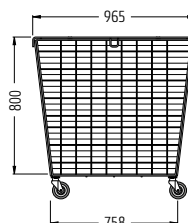
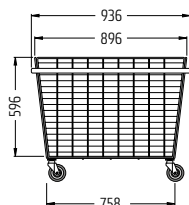
**TK-R**  
Transport basket



**TK-D**  
Transport basket



Both transport baskets can be stacked to save space.



**Standard equipment:** narrow-mesh wire basket with white all-round rubber profile as bumper.

**Finish:** plastic powder coating, white.

**Castors:** 4 swivel castors, with plastic deflector rings and rubber treads, castor diameter 125 mm.

**Standard equipment:** tall, narrow-mesh wire basket with lid, can be locked if required. Padlock not included.

**Finish:** high-gloss, galvanised, chrome-plated, silver.

**Castors:** 4 castors, rubber tread, castor wheel diameter 100 mm.

<b>TK-R transport basket</b>	<b>Prod. No.</b>
With bumper	05.42710.61-9010

<b>TK-D transport basket</b>	<b>Prod. No.</b>
With lid	05.41810.50-0000

# 02 Product overview

## 02.01 – 02.05 Luggage collection trolleys



## 02.06 – 02.08 Luggage transport trolleys



## 02.09 – 02.10 Guidance systems



## 02 Front Office



## 02.01 Premium GS-Trend

*The extravagant luggage collection trolley*

- > *An eye-catcher at check-in*
- > *Highly manoeuvrable, optional with parking brake*
- > *Integrated coat rail*



**GS-TREND**

Electro-polished stainless steel  
Illustration shows optional equipment.

Design pend.



## 02.01 Premium GS-Trend

■ **Elegant and stylish first** impression. Innovation and quality packaged in an elegant design: the GS-Trend.



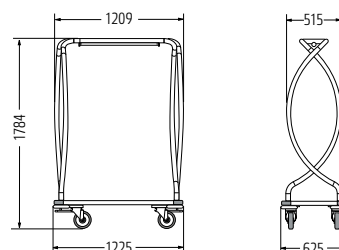
**GS-TREND**  
Electro-polished stainless steel  
Illustration shows optional equipment.

Design pend.

Carpet finishes

### Optional locking brake

**Securely positioned:** even when the GS-Trend is loaded with lots of luggage, the brake holds it in place on uneven flooring.



**Standard equipment:** round-tube design with clothes rail. Sturdy platform with all-round bumper and deflectors, heavy-duty, stain-resistant carpet in anthracite.

**Finish:** electro-polished high-grade steel.

**Castors:** 2 swivel castors, 2 fixed castors, quiet rubber tread, castor wheel diameter 160 mm.

#### GS-Trend luggage collection trolley

Electro-polished stainless steel, carpet in anthracite

Electro-polished stainless steel, carpet in anthracite, with parking brake

Logo carpet (from 3 units)

#### Prod. No.

05.59778.31-V006

05.59778.31-V007

On request

## 02.02 GS-Lobby

The classic luggage collection trolley

- > Available in high-quality finishes
- > Attractive, durable carpet lining
- > Optional locking brake



**GS-LOBBY**  
Stainless steel, gold plated

200 kg ↓



**GS-LOBBY**  
Stainless steel, electro-polished, with parking brake

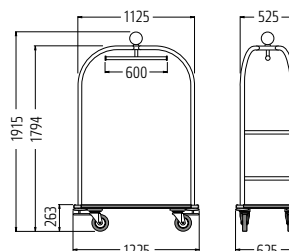
Carpet finishes



**Prevents the trolley accidentally rolling away**

### Optional brake

An ideal addition to make the GS-Lobby secure on inclines.



**Standard equipment:** tubular design with elegant 'crown' and clothes rail. Sturdy platform with all-round bumper and deflectors, heavy-duty, stain-resistant carpet in anthracite.

**Finish:** electro-polished high-grade steel.

**Castors:** Wanzl bonded-on castors, castor diameter 160 mm, rubber tread. 2 fixed castors/2 swivel castors as standard.

GS-Lobby luggage collection trolley	Prod. No.
Electro-polished stainless steel, carpet in anthracite	04.14691.31-0000
Gold-plated stainless steel, carpet in red	04.14691.58-0001
Electro-polished stainless steel, carpet in anthracite, with locking brake	04.14691.31-0001
Gold-plated stainless steel, carpet in red, with locking brake	04.14691.58-0000
Logo carpet (from 3 units)	On request

## 02.03 GS-Lobby XS

*The classic in XS format*

- > Available in high-quality finishes – compact design
- > Attractive, durable carpet lining
- > Optional locking brake



**GS-LOBBY XS**  
Electro-polished stainless steel



**GS-LOBBY XS**  
Gold plated stainless steel, with parking brake  
Illustration shows optional equipment

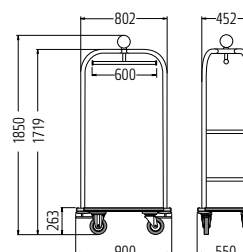
Carpet finishes



**Prevents the trolley accidentally rolling away**

### Optional brake

An ideal addition to make the GS-Lobby XS secure on inclines.



**Standard equipment:** tubular design with elegant 'crown' and coat rail. Sturdy platform with all-round bumper and deflectors, heavy-duty, stain-resistant carpet in anthracite.

**Finish:** electro-polished high-grade steel.

**Castors:** 2 fixed castors, 2 swivel castors, quiet rubber tread, castor wheel diameter 160 mm.

GS-Lobby XS luggage collection trolley	Prod. No.
Electro-polished stainless steel, carpet in anthracite	04.14578.31-0000
Gold-plated stainless steel, carpet in red, with locking brake	04.14578.58-0000
Electro-polished stainless steel, carpet in anthracite, with locking brake	04.14578.31-0001
Logo carpet (from 3 units)	On request

## 02.04 GS-Group

The luggage collection trolley for group luggage

- > With generous, stable luggage storage
- > Plastic profiles on the sides to protect interior décor
- > Coat rail as standard, can be removed as required



**GS-GROUP**  
Luggage collection trolleys

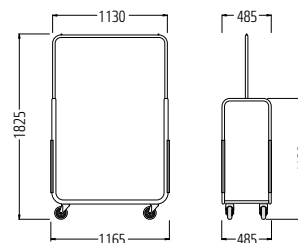


**GS-GROUP**  
Luggage collection trolley, with optional wooden platform

### Coat rail as standard

#### Can be removed if necessary:

A thoroughly practical detail, it can be flexibly adjusted to match the type and amount of luggage.



**Standard equipment:** round-tube design with robust storage area for cases and bags. Plastic profiles mounted at the side on the upright bars to protect the interior.

**Finish:** steel, high-gloss chrome-plated

**Castors:** 2 swivel castors, 2 fixed castors with quiet rubber tread, castor wheel diameter 125 mm.

GS-Group luggage collection trolley	Prod. No.
High-gloss chrome-plated	04.02148.10-0000
Accessories	
Wooden platform	77.39221.95-0000

## 02.05 GS-Compact

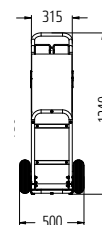
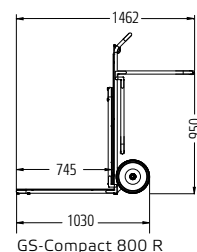
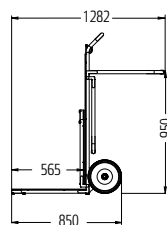
*The practical luggage collection trolley*

- > Particularly ergonomic operation
- > Available with a choice of short or long loading areas
- > Pneumatic tyres for smooth running



### Stable even when fully laden

**As practical as it gets.** Provides lots of space and saves lots of space with its fold-out loading areas in 2 lengths.



**Standard equipment:** round-tube design. Platform can be unfolded for use and folded back up if necessary for space-saving storage. Loading area covered with tough, non-slip carpet.

**Finish:** stainless steel, gold-plated stainless steel.

**Castors:** 2 pneumatic tyres for smooth running, black tread. Pneumatic tyre diameter: 260 mm.

GS-Compact luggage collection trolley	Prod. No.
GS-Compact 600 R, stainless steel, carpet in red	05.26782.31-V003
GS-Compact 600 A, stainless steel, carpet in anthracite	05.26782.31-V002
GS-Compact 800 R, stainless steel, carpet in red	05.23731.31-V003
GS-Compact 800 A, stainless steel, carpet in anthracite	05.23731.31-V002
GS-Compact 600 R, gold-plated stainless steel, carpet in red	05.26782.58-V001
GS-Compact 800 R, gold-plated stainless steel, carpet in red	05.23731.58-V001

## 02.06 Aera 300 L

*The stylish luggage transport trolley*

- > *Impresses with its clear geometry*
- > *Large deflectors protect luggage – the all-round bumper rail protects interior décor*
- > *Large, high-quality castors guarantee easy handling*

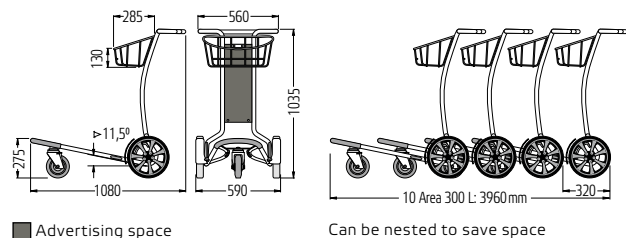


**AERA 300 L**  
Luggage transport trolleys

Design pend.

### Large, protective deflectors

**Luggage remains undamaged.**  
A useful detail that adds to the appeal of the Aera 300 L.



■ Advertising space

Can be nested to save space

**Standard equipment:** steel, round-tube design. All-round bumper rail on the large loading area. Generous powder-coated basket. Can be nested to save space.

**Finish:** galvanised, chrome-plated, transparent, polyester-coated.

**Castors:** 2 fixed castors, 1 swivel castor, fixed castor wheel diameter 280 mm, swivel castor diameter 160 mm.



**Special feature included as extra:** the handle of the Aera 300 L is treated with an antibacterial coating, ensuring hygienic conditions in the hotel environment.

**Aera 300 L luggage transport trolley**

Galvanised chrome-plated

**Prod. No.**

05.60795.52-0000

# 02.07 Voyager 3000

Luggage transport trolley with an impressive design

- > Extremely easy operation thanks to automatic brake bar
- > Antibacterial, ergonomic handle with printed operating instructions
- > All-round bumper rail to protect interior décor



**VOYAGER 3000**  
Luggage transport trolleys

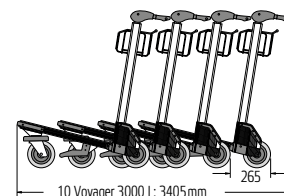
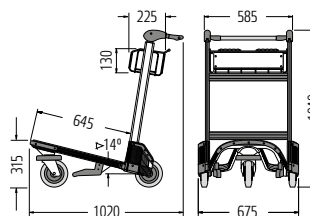
Pat. pend.

## Zero-maintenance brake bar

**Functionality** and safety for your guests in one system.



Pat. pend.



10 Voyager 3000 L: 3405mm  
Can be nested to save space

**Standard equipment:** aluminium construction. All-round bumper rail on the large loading area. Practical basket for hand luggage or travel paraphernalia. Can be nested to save space.

**Finish:** anodised aluminium. Basket in high-grade steel, electro-polished.

**Castors:** 2 fixed castors, 1 swivel castor, rubber tread, castor wheel diameter 180 mm.



**Special feature included as extra:** the handle of the Voyager 3000 is treated with an antibacterial coating, ensuring hygienic conditions in the hotel environment.

**Voyager 3000 luggage transport trolley**

**Prod. No.**

Anodised aluminium, with brake

05.48251.95-0000

## 02.08 Travel 300

Luggage transport trolley – simple and convenient

- > Antibacterial, ergonomic handle with side caps
- > Can be nested to save space
- > Plastic profiles prevent damage to interior décor

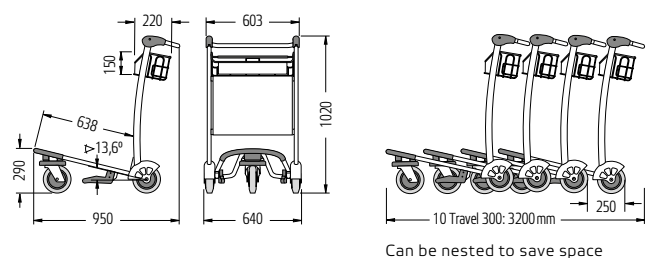


**TRAVEL 300**  
Luggage transport trolleys

Pat. pend.

### A stylish space-saver

**Wanzi luggage transport trolleys** are stylish space-savers for use anywhere. Very versatile and capable of nesting extremely compactly, they allow even large numbers to be used in hotels of all kinds – a benefit that your guests will appreciate too.



Can be nested to save space

**Standard equipment:** steel-tube design with sturdy luggage support. Self-adjusting, zero-maintenance brake. All-round bumper rail on the loading area. Practical basket for hand luggage or travel paraphernalia. Can be nested to save space.

**Finish:** galvanised, chrome-plated, transparent, polyester-coated.

**Castors:** 2 fixed castors, 1 swivel castor, rubber tread, castor wheel diameter 180 mm.



**Special feature included as extra:** the handle of the Travel 300 is treated with an antibacterial coating, ensuring hygienic conditions in the hotel environment.

**Travel 300 luggage transport trolley**

Galvanised chrome-plated steel, with brake

**Prod. No.**

05.44296.52-V008



## 02.09 Part Flex 2000

*Flexible guidance system*

- > A mobile and effective way to section off areas
- > Uprights made of steel tubing with integrated reel mechanism for pull-out bands
- > Triple docking facility



**PART FLEX 2000**  
Guidance system

Extremely easy to use.

**WALL CLIP** made of stainless steel

### Barriers in up to 4 directions

**Very flexible** and effective guidance system; can be used to separate areas and direct people.



### Printed pull-out band

**Your hotel logo** can be printed according to requirements. Fully in keeping with your universal corporate design.



On request.

**Standard equipment:** uprights made from steel tubing with integrated reel mechanism and triple docking facility. Pull-out bands in 3 colours, 2000 mm long. Base plate with slip-proof plastic profile, cover made from black plastic.

**Finish:** uprights with high-gloss chrome plating

**Dimensions:** Upright height 940 mm, base plate diameter 340 mm.

Part Flex 2000	Prod. No.
Upright with pull-out band, red	23.75100.10-0000
Upright with pull-out band, dark blue	23.75101.10-0000
Upright with pull-out band, grey	23.75102.10-0000
Accessories	
Wall clip	23.92892.09-0000

## 02.10 Part Line 2000

*One of the finest examples of guidance systems*

- > *Smooth elegance for every occasion*
- > *Subtle separation of lobbies, foyers and meeting rooms*
- > *With practical accessories: poster holder*



**MODEL L**  
In chrome and brass















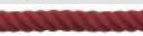







**MODEL C**  
In chrome and brass

**PART LINE 2000**  
Guidance system

## 02.10 Part Line 2000 order part



**MODEL L**  
in chrome with poster holder  
Red twisted polypropylene rope

Part Line 2000		Supplied unassembled	Prod. No.	Prod. No.
<b>Uprights</b>			<b>Chrome finish</b>	<b>Brass finish</b>
		<b>Model L</b> with conical head, height 950 mm, base plate diameter 320 mm	Steel	04.07122.10-0001
		<b>Model C</b> with round head, height 1010 mm, base plate diameter 320 mm	Steel	04.07120.10-0001
<b>Wall fixing bracket</b>			<b>Wall mounting material</b>	<b>Chrome finish</b>
		Wall fixing bracket	Steel	04.07233.10-0000
<b>Rope – velvet, 2 m</b>			<b>End piece material</b>	<b>Chrome finish</b>
<b>End pieces</b>	<b>Rope colour</b>			<b>Brass finish</b>
		 Red	Steel	77.38646.00-0001
		 Black	Steel	77.38646.00-0002
<b>Rope – twisted polypropylene, 2 m</b>				
<b>End pieces</b>	<b>Rope colour</b>			
		 Red	Steel	77.38645.00-0001
		 Black	Steel	77.38645.00-0002
<b>Accessories</b>			<b>Frame material</b>	<b>Chrome finish</b>
<b>Poster holder for uprights (model L)</b>				<b>Brass finish</b>
		DIN A4 portrait	Aluminium	04.07124.00-0000
		DIN A4 landscape	Aluminium	04.07125.00-0000
<b>Head for poster holder</b>			Steel	✓

---

## 03 Product overview

---

### 03.01 – 03.05 Service and serving trolleys



01 MBW SMART



02 MBW SECURE



03 COFFEE STATION



04 RSVC-COMFORT



05 EG 300 + EU 300

### 03.06 Bottle trolley



06 FW6



FW8



FW12

### 03.07 – 03.08 Tray trolleys



07 TBL 16



08 TBL 20

# 03 Food + Beverages



## 03.01 MBW Smart

*Minibar filling trolley – with 2 shelves*

- > Lockable roller shutter
- > Insertable shelves with wire bar – railing to prevent slipping
- > With deflectors to protect interior décor



Design pend.

Finishes



**MBW SMART**  
Natural oak finish

## 03.01 MBW Smart

■ **A reliable partner for minibar service** with clearly structured divisions for efficient filling with bottles and small items.

### Security as standard

**Locking roll down panel** for all MBW Smart models.



### Protective feature

**Integrated deflectors** made of rubber and all-round bumper profile protect the interior decor of your hotel.

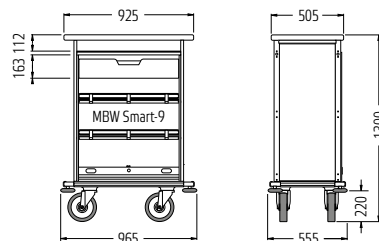


**Standard equipment:** steel-tube design, 2 fixed and 2 height-adjustable shelves. Chassis with all-round bumper profile and integrated rubber deflectors. Front side with lockable rolling shutter.

**Finish:** plastic powder-coating in titanium grey.

**MBW Smart-7 castors:** 2 swivel castors, 2 fixed castors with polyamide tread, castors diameter 200 mm.

**MBW Smart-9/Smart-11:** 2 swivel castors, 2 fixed castors with polyamide tread, castors diameter 200 mm.



Other sizes for MBW Smart as on page 5.

Minibar filling trolley models		MBW Smart-7	MBW Smart-9	MBW Smart-11
Dimensions		805 x 555 x 1300	965 x 555 x 1300	1155 x 555 x 1300
		Prod. No.	Prod. No.	Prod. No.
<b>MBW Smart</b>	Anthracite, natural oak, mahogany finish	<b>04.01250.95-V</b>	<b>04.01251.95-V</b>	<b>04.01252.95-V</b>

Special equipment				
Drawer made from sheet steel, with plastic powder coating, titanium grey		☑	☑	☑
Shortened shelf, with wire bar to prevent slipping	Anthracite, natural oak, mahogany finish	☑	☑	☑
Closable lid	Anthracite, natural oak, mahogany finish	☑	☑	☑
Castors with rubber tread		☑	☑	☑
Accessories				
Wooden box for small items, painted light pearl grey		00.21837.78-9022	00.21837.78-9022	00.21837.78-9022
Wooden box for small items, clear varnished		00.60694.78-0000	00.60694.78-0000	00.60694.78-0000
Brochure holder, metal, titanium grey		00.22289.73-7084	00.22289.73-7084	00.22289.73-7084
Top box, metal, plastic powder-coated in titanium grey		04.03504.73-7084	04.03504.73-7084	04.03504.73-7084
Spaces for top box on top shelf		1	1	2
Drawer compartment divider		77.76090.73-7084	77.76090.73-7084	77.76090.73-7084

## 03.02 MBW Secure

Minibar filling trolley – with 3 drawers

- > With lockable plastic roll-down panel as standard
- > Practical compartment dividers to improve organisation
- > Transports bottles upright up to a height of 31 cm



Design pend.

Finishes



**MBW SECURE**  
Anthracite finish



## 03.02 MBW Secure

■ **For reliable minibar service.** Improved design incorporating new drawer division, optimised recessed handles and an effective bumper.



**MBW SECURE**  
Anthracite finish

### Upright transportation of bottles

A highlight for the minibar service is the upright transportation of 0.7 litre bottles.



### Practical compartment dividers

Helps keep minibar tidy and prevent bottles from falling over during transport.

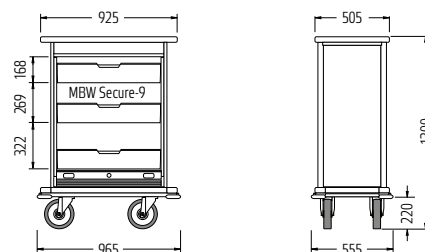


**Standard equipment:** steel-tube design, 3 stable drawers, each with 2 compartment dividers, can be pulled out individually, with built-in lock. Chassis with all-round bumper profile and integrated (non-marking) rubber deflectors. Front side with lockable rolling shutter.

**Finish:** plastic powder coating in titanium grey.

**MBW Secure-7 castors:** 2 swivel castors, 2 fixed castors with polyamide tread, castors diameter 200 mm.

**MBW Secure 9, -11:** 2 swivel castors, 2 fixed castors with polyamide tread, castors diameter 200 mm.



Other sizes for MBW Smart as on page 5.

Minibar filling trolley models		MBW Secure-7	MBW Secure-9	MBW Secure-11
Dimensions		805 x 555 x 1300	965 x 555 x 1300	1155 x 555 x 1300
		Prod. No.	Prod. No.	Prod. No.
<b>MBW Secure</b>	Anthracite, natural oak, mahogany finish	<b>04.03140.95-V</b>	<b>04.03150.95-V</b>	<b>04.03160.95-V</b>

Special equipment				
Closable lid	Anthracite, natural oak, mahogany finish	☐	☐	☐
Castors with rubber tread		☐	☐	☐
Accessories				
Wooden box for small items, painted light pearl grey		00.21837.78-9022	00.21837.78-9022	00.21837.78-9022
Wooden box for small items, clear varnished		00.60694.78-0000	00.60694.78-0000	00.60694.78-0000
Brochure holder, metal, titanium grey		00.22289.73-7084	00.22289.73-7084	00.22289.73-7084
Top box, metal, plastic powder coating in titanium grey		04.03504.73-7084	04.03504.73-7084	04.03504.73-7084
Spaces for top box on top shelf		1	1	2
Drawer compartment divider		77.76090.73-7084	77.76090.73-7084	77.76090.73-7084

## 03.03 Coffee station

*Ideal for events and conferences*

- > *Drawer as standard*
- > *Lockable roller shutter*
- > *Height-adjustable shelves*



### COFFEE STATION

Anthracite finish, plastic roll-down panel open

### COFFEE STATION

Anthracite finish, plastic roll-down panel closed

## 03.03 Coffee station

■ The mobile coffee station from Wanzl enables your coffee machine to be used flexibly and anywhere.

### Castors

2 swivel castors, 2 fixed castors, with polyamide treads.



### Protective feature:

Integrated deflectors made of rubber and all-round bumper protect the hotel interior.



### Large storage areas

Shelves to prepare milk, sugar and pastries.



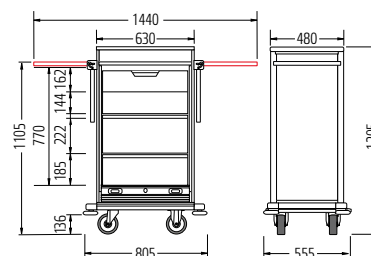
### Practical compartment dividers

Establish order when sorting the coffee range.



### Security as standard

Locking roll-down panel that makes the process safe and very fast. As standard.



**Standard equipment:** steel-tube design, 2 fixed and 2 height-adjustable shelves. 1 robust drawer with 2 compartment dividers, can be pulled out individually, with built-in lock. 2 trays that pull out to the side, chassis with an all-round bumper and integrated rubber deflectors. Front side with lockable rolling shutter.

**Finish:** plastic powder coating in titanium grey.  
**Castors:** 2 swivel castors, 2 fixed castors, with polyamide treads.

Coffee station

Standard equipment

Prod. No.

04.13561.95-V003

## 03.04 RSVC-Comfort

*The room-service table*

- > *With hinged side parts*
- > *Can be nested to save space*
- > *Optional, integrated hot box*



**RSVC-COMFORT**  
Room service table



RSVC-Comfort, collapsed

## 03.04 RSVC-Comfort

■ **Ideally dimensioned and stable side table** for hotel rooms and restaurants, folding sides for narrow passages. Also available on request with integrated hot box for keeping meals hot.



RSVC-Comfort with removable handle



RSVC-Comfort with hot box



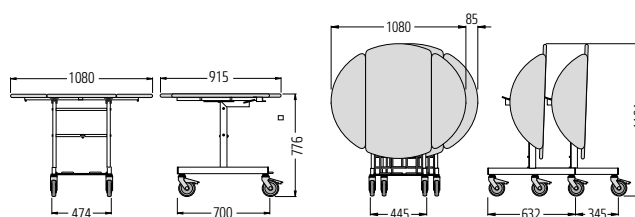
RSVC-Comfort with grip handle

**SHELF UNIT**

Mobile, for storing up to 6 hot boxes

### Hot box

**With 3 shelves**, the hot box is ideal for ensuring meals stay hot on their way to guest rooms. All connections at the back.

**HOT BOX**  
Stainless steel**HOT BOX**  
Black

Can be nested to save space

**Standard equipment:** steel-tube design with oval tabletop in wood finish with tough, sealed edge and fold-down side parts. Fold-out chrome-plated rack for the hot box. The tabletops can be locked in a vertical position for storage and transport and the RSVC-Comfort can be nested to save space.

**Finish:** plastic powder coating in jet black.

**Castors:** 4 swivel castors, incl. 2 with brakes, rubber tread, castor wheel diameter 125 mm.

RSVC-Comfort room-service table	Prod. No.
With fold-down side sections and 2 grids	04.12883.95-0000
<b>Accessories</b>	
Removable handle	04.12996.73-9005
Dimensions for 1 hot box (mm) W 410 x D 410 x H 530	
Electric hot box, with 3 shelves, stainless steel	77.91379.09-0000
Electric hot box, with 3 shelves, black	77.91379.09-0001
Shelf unit for 6 hot boxes, mobile	
Dimensions (mm) W 1050 x D 500 x H 1500	04.14804.73-7084

# 03.05 EG 300 and EU 300

*The classic serving trolley*

- > With 3 shelves
- > High edges all around for safe transport
- > Made of hygienic stainless steel (EG 300)

40 kg ↓  
Per shelf

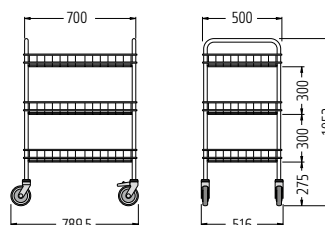
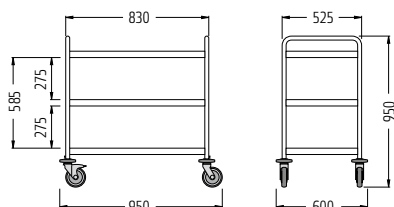


**EG 300**  
Serving trolley

40 kg ↓  
Per shelf



**EU 300**  
Serving trolley



**Standard equipment:** round tubing design, with 3 shelves made of stainless steel.

**Finish:** round tubing and shelves made from high-grade steel.

**Castors:** 4 swivel castors with plastic deflector rings, 2 with brake. Rubber tread, castor wheel diameter 125 mm.

EG 300 serving trolley	Prod. No.
EG 300 with 3 shelves	04.04400.09-0000
With optional ultra-smooth castors	04.04400.09-0001

**Standard equipment:** round-tube handle. 3 wire shelves with wooden board bases in birch finish. High edges made from wire.

**Finish:** handles and wire shelves high-gloss chrome-plated.

**Castors:** 4 swivel castors, 2 with brakes, rubber tread, castor wheel diameter 125 mm.

EU 300 serving trolley	Prod. No.
With 3 shelves	04.02487.10-0000

# 03.06 Bottle trolley

Sturdy trolley in three sizes

- > Flexible shelves
- > Storage and transport of 6, 8 or 12 drinks crates
- > With 2 brakes as standard



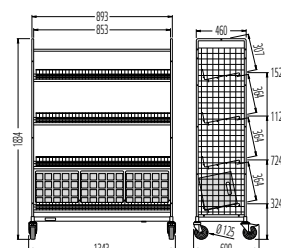
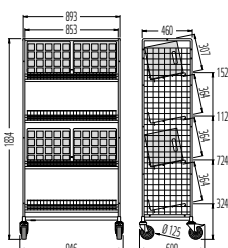
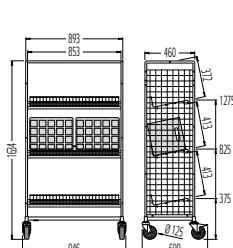
**BOTTLE TROLLEY 6**  
For 6 drinks crates



**BOTTLE TROLLEY 8**  
For 8 drinks crates



**BOTTLE TROLLEY 12**  
For 12 drinks crates



## Mobile storage

**With 2 brakes as standard:** prevents unintended movement of the trolley, thus securing up to 12 drinks crates in position.



**Castors:** 4 swivel castors with plastic deflector rings, 2 with brake fixings, rubber tread, castor wheel diameter 125 mm.

**Standard equipment:** chassis and side sections made from square tube with wire grid, adjustable shelves.  
**Finish:** high-gloss, galvanised, chrome-plated

Bottle trolley	Prod. No.
Bottle trolley 6	05.82378.50-0000
Bottle trolley 8	05.82379.50-0000
Bottle trolley 12	05.82830.50-0000

# 03.07 TBL 16

*A functional, high-quality tray trolley*

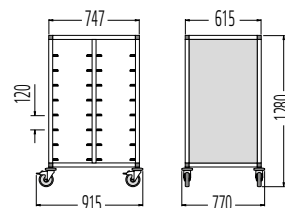
- > Holds 16 trays in 2 rows
- > Side cladding in wooden look, light oak finish
- > Brakes as standard



**TBL 16**  
Tray trolley

## Optimum handling

**Safely stowed:** wide wire supports for easy insertion of trays.



**Standard equipment:** frame made of special-purpose anodised light-alloy profiles.

**Finish:** high-gloss chrome-plated.

**Castors:** 4 swivel castors with deflector rings, 2 with brakes. Rubber tread, castor wheel diameter 125 mm.

### TBL 16 tray trolley

For holding up to 16 trays

Plastic tray in light mocha, 530 x 325 mm

### Prod. No.

04.13335.95-0001

04.05086.78-0000



# 03.08 TBL 20

*An elegant, functional tray trolley*

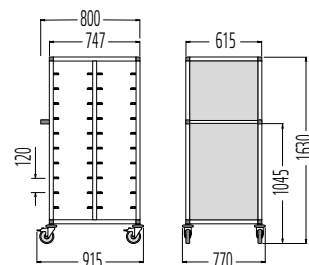
- > Holds 20 trays in 2 rows
- > Stable melamine resin-coated panels, light oak finish
- > Brakes as standard



**TBL 20**  
Tray trolley

## *Indispensable in the catering business*

**The mobile tray trolley:** for efficient and time-saving service processes. The functional equipment and high-quality finish make the perfect combination.



**Standard equipment:** frame made of special-purpose anodised light-alloy profiles. Two separate compartments, enclosed on all sides by melamine resin-coated panels, light oak finish.

**Finish:** high-gloss chrome-plated.

**Castors:** 4 swivel castors with deflector rings, 2 with brakes, rubber tread, castor wheel diameter 125 mm.

TBL 20 tray trolley	Prod. No.
For holding up to 20 trays	04.13336.95-0001
Plastic tray in light mocha, 530 x 325 mm	04.05086.78-0000

---

# 04 Product overview

---

## 04.01 Service shelves



01 HIGH RACK + HIGH RACK, MOBILE

---

## 04.02 - 04.05 Transport trolleys



02 T25

03 SP2

---

## 04 Storage + Shelving



# 04.01 High rack

*Fixed and movable service shelf*

- > Numerous base and expansion elements
- > Shelves also available with coloured plastic powder coating, white
- > Delivery always unassembled – variable installation of the shelves



**HIGH RACK**  
Fixed, corner combination  
5 shelves, high-gloss chrome  
(Example structure)



**SHELF-CONNECTOR**  
Accessories



**HIGH RACK**  
Mobile, 4 shelves with plastic powder  
coating, white

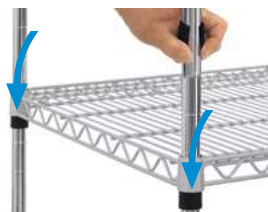
**HIGH RACK**  
Fixed, 5 shelves with plastic powder  
coating, white

## 04.01 High rack

■ **For even better organisation.** One of the most modern systems for organisation and transport, with numerous different base and expansion elements – fixed and movable – as required.

### Variable installation of the shelves

With plastic clamping bushes in the 50 mm grid, the shelves can be flexibly adjusted to the desired height.



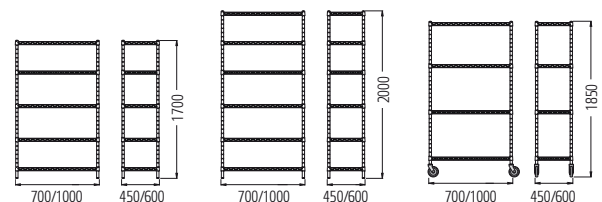
### High rack, movable

With high-quality swivel castors, 2 with brakes – guarantee stability and mobility as required. Castor diameter: 125 mm.



### Standard equipment:

High-gloss, chrome-plated uprights with top end caps and plastic feet or 4 swivel castors, 2 with brakes, castor wheel diameter 125 mm. Wire shelves in high-gloss chrome-plating or plastic powder coating, white. Plastic clamping bushes for assembling wire shelves with a mesh width of 165 x 20 mm.



High rack, fixed		Prod. No.	Prod. No.
	Widths (mm)	Depth 450	Depth 600
<b>Height 1700 with 5 shelves</b>			
Uprights and shelves:	700 mm	04.30001.10-0000	-
High-gloss chrome-plated	1000 mm	04.30004.10-0000	04.30005.10-0000
Uprights: high-gloss chrome-plated	700 mm	04.30001.95-9010	-
Shelves: plastic powder coating, white	1000 mm	04.30004.95-9010	04.30005.95-9010
<b>Height 2000 with 6 shelves</b>			
Uprights and shelves:	700 mm	04.30006.10-0000	-
High-gloss chrome-plated	1000 mm	04.30008.10-0000	04.30009.10-0000
Uprights: high-gloss chrome-plated	700 mm	04.30006.95-9010	-
Shelves: plastic powder coating, white	1000 mm	04.30008.95-9010	04.30009.95-9010
<b>Accessories</b>			
Shelf connector		04.30020.00-0000	
High rack, movable		Prod. No.	Prod. No.
	Widths (mm)	Depth 450	Depth 600
<b>Height 1850 with 4 shelves</b>			
Uprights and shelves:	700 mm	04.03000.10-0000	-
High-gloss chrome-plated	1000 mm	04.02826.10-0000	04.03010.10-0000
Uprights: high-gloss chrome-plated	700 mm	04.03000.95-9010	-
Shelves: plastic powder coating, white	1000 mm	04.02826.95-9010	04.03010.95-9010

# 04.02 T25 transport trolley

*Our little helper*

- > Can be nested to save space
- > Wire platform with double edging wire
- > With tightly-meshed wire basket

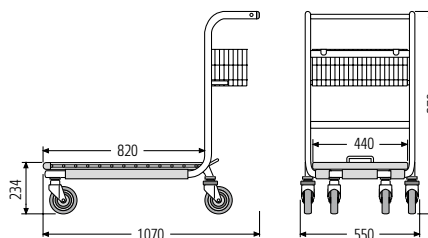
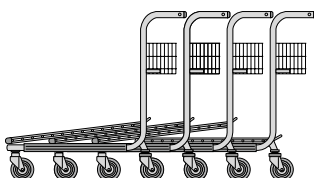


**T25**  
Transport trolleys

*Can be nested to save space*

### Space requirement in row

Per trolley	300 mm
10 trolleys	3770 mm



**Standard equipment:** can be nested to save space. Rack made of flat rolled steel tubing. Wire platform with double edging wire. With tightly-meshed wire basket.

**Finish:** high-gloss galvanised, chrome-plated and transparent plastic powder coating.

**Castors:** 4 swivel castors, rubber tread. Castor diameter: 125 mm.

T25 transport trolley	Prod. No.
With wire platform	05.18570.52-V006
Load capacity (kg)	300
Weight (kg)	15

## 04.03 SP2 special transporter

*For transporting bulky goods*

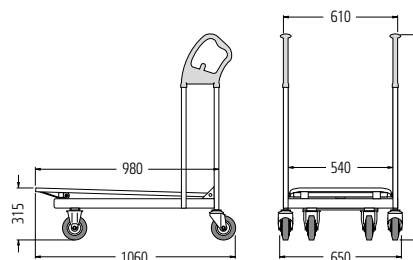
- > *Ergonomically designed handle*
- > *For compact storage*
- > *Custom trolley design*



**SP2**  
Special transporter

### Quiet

**Cushion roller and rubber absorber** between wooden platform and frame to protect the device and reduce noise.

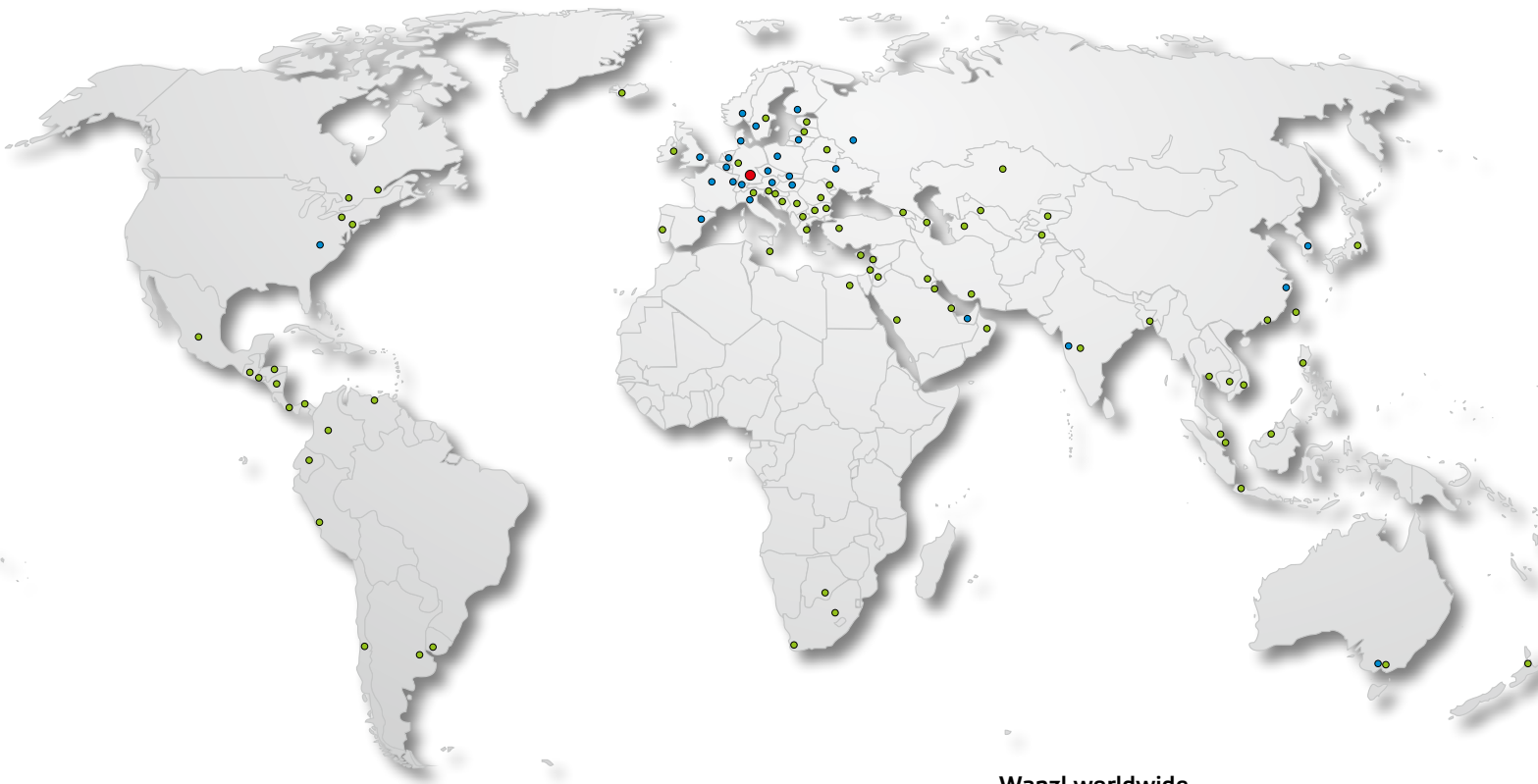


**Standard equipment:** frame made of flat rolled steel tubing, round tubing bars with ergonomically shaped handles made of shatterproof plastic. Frost- and water-resistant wooden platform with protective frame all round made of square tube.

**Finish:** high-gloss, galvanised, chrome-plated.

**Castors:** 2 fixed castors, 2 swivel castors, rubber tread. Castor diameter: 160 mm.

SP2 special transporter	Prod. No.
With wooden platform	05.20458.51-V031
Load capacity (kg)	400
Weight (kg)	28



#### Wanzl worldwide

- Head Office
- Subsidiaries
- Partners



**GERMANY**  
Wanzl GmbH & Co. KGaA  
Rudolf-Wanzl-Straße 4  
89340 Leipheim

Phone +49 (0) 82 21 / 7 29-0  
Fax +49 (0) 82 21 / 7 29-6530

hotel@wanzl.com  
www.wanzl.com



# Hotel Service

Optimised daily hotel processes

Hotel Service

